

SCHLICK 650-655系列和700系列喷嘴 SCHLICK Series 650-655 and Model 700

Mod. 650-655, 700

- 多种多样的扁平喷嘴为所有可能的雾化应用场合提供了完美的解决方案

Very varied designs for SCHLICK flat jet nozzles offer perfect solutions for almost every application possible

- 有各种尺寸的扁平喷嘴可供选择，喷嘴材料亦可按客户指定

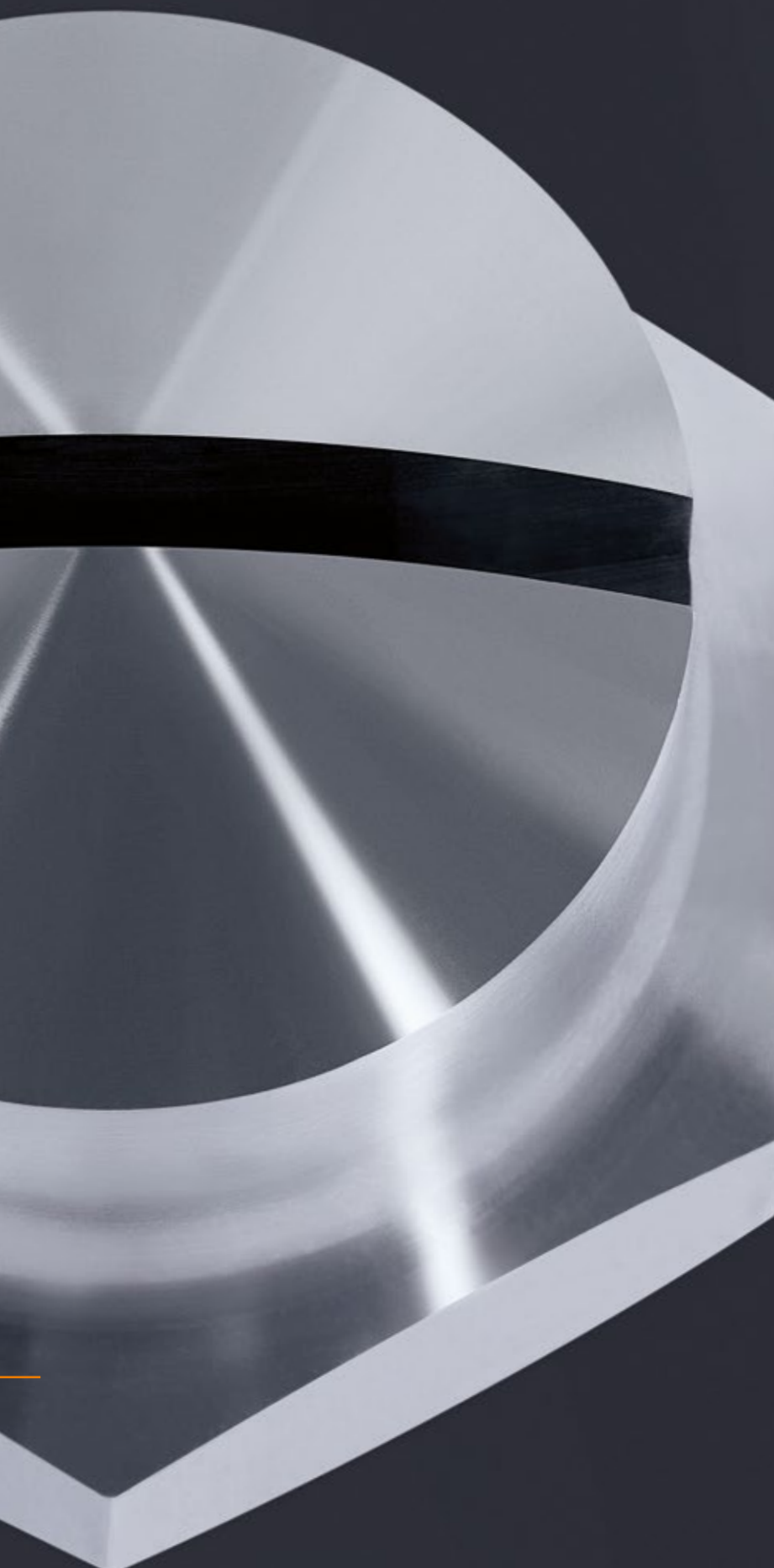
Very varied sizes and a large choice of materials compliment the comprehensive range on offer

- 成熟的SCHLICK雾化技术确保了雾化效果的一致性

The familiar and proven SCHLICK technology ensures reproducible results

为雾化技术而生

SCHLICK 雾化解决方案



材质

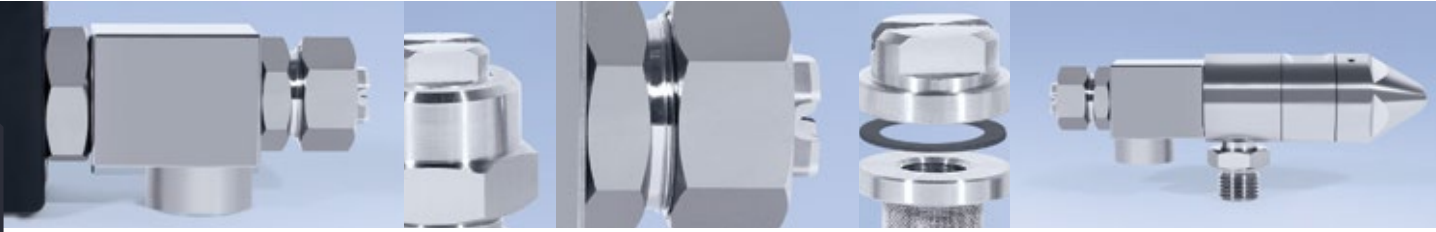
- 耐酸不锈钢
- 耐高温不锈钢
- 黄铜
- 哈氏合金
- 聚氯乙烯
- 聚偏氟乙烯
- 客户指定材

Materials

- Acid resistant stainless steel
- Heat resistant stainless steel
- Brass
- Hastelloy
- PVC
- PVDF
- Custom materials available on request

- 产品目录
Product Overview
- 两液体喷嘴
Two-Substance
Nozzles
- 防滴漏/专业包浆技术
ABC/PCA Technique
- 三/四液体喷嘴
Three-/Four-
Substance Nozzles
- 多头技术
Multispray
- 喷嘴杆
Insertion Pipes
- 喷嘴头
Nozzle Heads
- 实心锥喷嘴
Full Cone Nozzles
- 空心锥喷嘴
Hollow Cone Nozzles
- 硬质合金喷嘴
Carbide Nozzles
- 扁平喷嘴
Flat-Jet Nozzles
- 喷射喷嘴
Smooth-Jet Nozzles
- 混合喷嘴
Mixing Nozzles
- 拉瓦尔喷嘴
Laval Nozzles
- 清洗喷嘴
Cleaning Nozzles
- 喷嘴附件
Accessories
- 测试中心
Test Center

SCHLICK 650系列喷嘴 SCHLICK Series 650



超常稳定性： 雾化形状无与伦比的一致

SCHLICK扁平喷嘴适用于液体和气体或者蒸汽雾化。

视具体喷嘴型号，液体雾化时，雾化角度可达到20°-160°，
气体或者蒸汽雾化时，雾化角度大约要小30°。

喷嘴尺寸、流量、压力等都是影响雾化液滴大小的因素，一般，
压力大、喷孔小的情况下，雾化的液滴会很小。

Constancy: Unbeatable in its consistent spray pattern

SCHLICK flat-jet nozzles are suited to spraying both liquid and
gas or steam media.

Depending on nozzle model, spray angles between 20° and
160° are possible. Compared with liquid, the spray angle
reduces by approximately 30° for gas and steam.

The degree of atomisation is related to the nozzle size, the
capacity, and the differential pressure. Very fine droplets are
achieved with small orifices and high pressures.



SCHLICK 650系列喷嘴

650系列喷嘴仅仅由两个部件和喷嘴口组成，喷嘴口方向可按需求旋转，一般雾化角度为90°，也有30°，45°，60°，120°的喷嘴可供选择

SCHLICK model 650

Two-part nozzle construction with a nozzle exit, **which is interchangeable and can be rotated.** Normal spray cone 90°
Also available in: 30°, 45°, 60°, 120°

为了避免杂质导致喷嘴堵塞，扇形喷嘴650系列中流量最小的型号Size 0喷嘴，可增加过滤器，Size 1以及更大的型号，因为喷嘴口比较大，不容易堵塞，所以设计时没有考虑增加过滤器。

To avoid blockages in the exit, the smallest design of the SCHLICK fan nozzle model 650 (size 0) **is also available with a filter.** Due to the relatively large bore hole from size 1 these designs do not have a filter.



配备过滤器的650
Size 0喷嘴

未配备过滤器的650
Size 0喷嘴

SCHLICK model 650
Size 0 with filter

SCHLICK model 650
Size 0 without filter

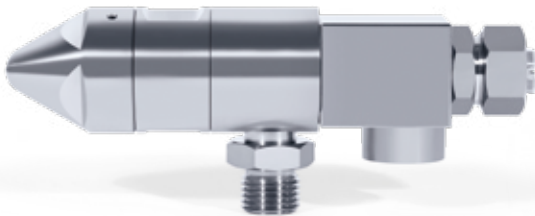
创新性产品设计

- 安装拆卸非常简单
- 防堵设计
- 应用场合极为广泛
- 终身售后服务保障
- 免费产品设计和技术支持

Innovative product design for perfect spraying:

- Extremely easy installation/de-installation
- Blockage-resistant
- Very wide range of applications
- Long-term after-sales warranty
- Engineering free of charge

100% 无滴漏
drip-free



SCHLICK 650 Form 7-1喷嘴配备气动控制针阀，当控制气关闭时，顶针马上顶出，封住出液口，尤其适用于蚀刻、打标、周期性喷涂等要求无滴漏的应用场合。

SCHLICK model 650 form 7-1 with pneumatic open/close control using control air. The nozzle needle closes the outlet abruptly when the control air is shut off. Especially suitable for etching, marking, cyclic spraying and above all for liquids under pressure where drips are to be avoided.

100% 无滴漏
drip-free



SCHLICK 650 Form 8喷嘴
电磁阀控制

标准设计：230 V, 50 Hz, 100%ED。
工作环境温度：最高55 °C
防水防尘等级：IP 65
循环频率：仅受转换时间限制。

SCHLICK model 650 form 8

With solenoid valve
Standard design: 230 V, 50 Hz, 100 % ED.
Ambient temperature: max. 55 °C
Enclosure protection IP 65.
Cycling frequency: limited only by the changeover time.

SCHLICK 650系列喷嘴

用在一些特定的场合，结构简单，无过滤器。
一般雾化角度为90°，
也有 30°，45°，60°，120°的喷嘴可供选择

SCHLICK model 650

Reduced design for use in restrictive applications. No filter.
Normal spray cone 90°,
also available in: 30°, 45°, 60°, 120°



产品目录
Product Overview

两液体喷嘴
Two-Substance
Nozzles

防滴漏/专业包衣材料技术
ABC/PCA Technique

三/四液体喷嘴
Three-/Four-
Substance Nozzles

多喷头技术
Multispray

喷嘴杆
Insertion Pipes

喷嘴头
Nozzle Heads

空心锥喷嘴
Full-Cone Nozzles

空心锥喷嘴
Hollow-Cone Nozzles

硬质合金喷嘴
Carbide Nozzles

扁平喷嘴
Flat-Jet Nozzles

喷射喷嘴
Smooth-Jet Nozzles

混合喷嘴
Mixing Nozzles

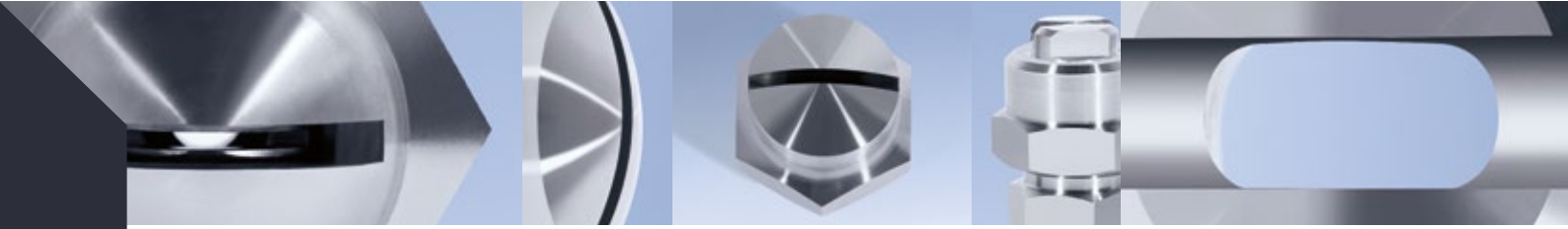
拉瓦尔喷嘴
Laval Nozzles

清洗喷嘴
Cleaning Nozzles

喷嘴附件
Accessories

测试中心
Test Center

SCHLICK 650-655系列和700系列喷嘴 SCHLICK Series 650-655 and Model 700



Mod. 650-655, 700



SCHLICK 651系列喷嘴, 配备压入式稳定装置, 雾化特别均匀, 喷嘴口也极为耐磨。一般雾化角度为90°, 也有20°, 40°, 60°, 120°, 160°的喷嘴可供选择

*SCHLICK model 651 with pressed-in stabilisation unit for an especially homogenous spray image. Slotted, welded exit. Normal spray cone 90°
Also available in: 20°, 40°, 60°, 120°, 160°*



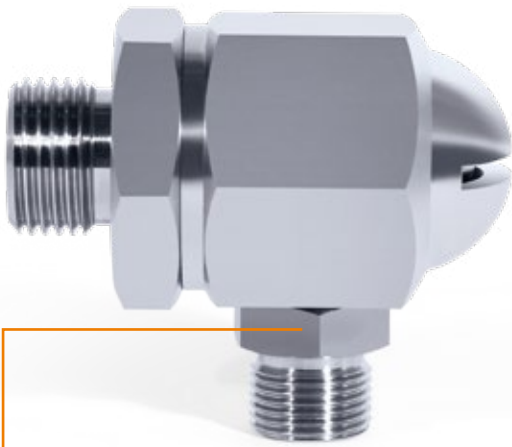
SCHLICK 655系列喷嘴, 总长短, 无其他配件, 喷嘴口为椭圆形, 防堵设计。一般雾化角度为60° 也有15°, 30°, 45°, 90°, 120°的喷嘴可供选择

SCHLICK model 655 with a short nozzle body without additional fittings. Oval exit bore hole. Remains resistant to blockages and impurities in the liquid. Normal spray cone 60°, also available in: 15°, 30°, 45°, 90°, 120°



信任和质量是合作成功的基础,这不仅仅指我们的产品,也适用于我们的服务。如有需要,我们可向您提供喷嘴相关文件,如技术手册(包括图纸、流量图、安装和操作说明)、SCHLICK 公司的相关证书以及喷嘴的材质说明。

Reliability and quality are the basis for successful cooperation with our international customers. This applies both to our products and to our service. If you wish, we will supply you with all necessary documentation such as technical handbooks for the nozzles (drawings, flow diagrams, installation and operating instructions) together with factory and material specifications.



SCHLICK 700系列喷嘴,尾部中心进液,中间位置垂直进气,此系列喷嘴可用作压力式喷嘴,也可用作两流体喷嘴,喷嘴口为槽形。雾化角度 90° - 120°

SCHLICK model 700 with centric liquid and right-angled compressed air attachment. Can also be used as a pressure or two-substance nozzle. Slotted exit for air and liquid. Spray cone 90° - 120°



雾化形状: 扁平雾化



雾化角度: 20° - 160°
(视具体型号,气体或者蒸汽雾化时,雾化角度大约要小 30°)



处理量: 0.07-1000 l/min,
3 bar(视具体型号)



常规孔径: 槽形或椭圆形



Spray pattern: flat-jet



Spray angle: 20° - 160°
(depending on nozzle type; with gas and steam flow the spray angle is reduced by approx. 30°)



Capacity: 0.07 - 1000 l/min with 3 bar
(depends on nozzle model)



Standard orifices: slit or oval

SCHLICK 650-655系列和700系列喷嘴 SCHLICK Series 650-655 and 700

Mod. 650-655, 700



压力式喷嘴 / 扁平雾化

Pressure Nozzles / Flat-Jet

应用

- 洗车设备
- 清洁设备
- 冷却
- 粉尘控制
- 消防设备及雨帘
- 保湿

Applications

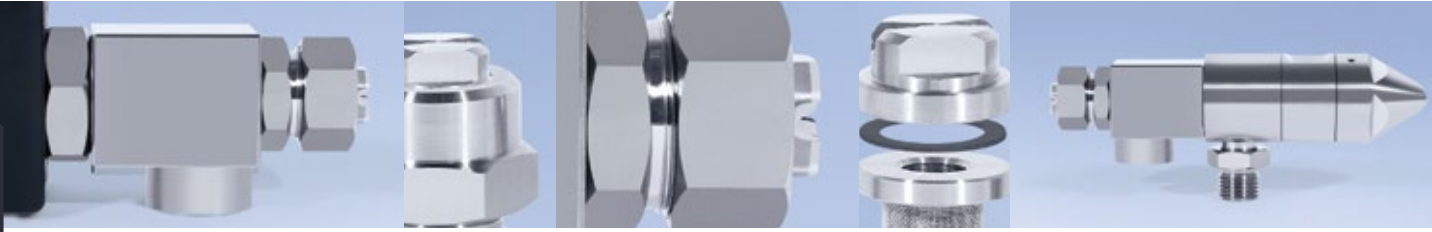
- Car wash equipment
- Cleaning equipment
- Cooling
- Dust control
- Fire protection equipment and rain curtains
- Moisturising



- 产品目录
- Product Overview
- 两液体喷嘴
- Two-Substance Nozzles
- 防飞溅/专业包浆技术
- ABC/PCA Technique
- 三/四液体喷嘴
- Three-/Four-Substance Nozzles
- 多喷头技术
- Multispray
- 喷射杆
- Insertion Pipes
- 喷嘴头
- Nozzle Heads
- 实心锥喷嘴
- Full-Cone Nozzles
- 空心锥喷嘴
- Hollow-Cone Nozzles
- 硬质合金喷嘴
- Carbide Nozzles
- 扁平喷嘴
- Flat-Jet Nozzles
- 喷射喷嘴
- Smooth-Jet Nozzles
- 混合喷嘴
- Mixing Nozzles
- 拉瓦尔喷嘴
- Laval Nozzles
- 清洗喷嘴
- Cleaning Nozzles
- 喷嘴附件
- Accessories
- 测试中心
- Test Center

具体技术参数

Technical Details



650系列喷嘴尺寸

Dimensions of model 650

尺寸 Size	0 (小尺寸) 0 (small mounting)	0 (正常尺寸) 0 (normal mounting)	1	2	3	4
螺纹规格 Connector ISO 228 G	1/8	1/4	1/4	3/8	1/2	1/2, 3/4
总长H (mm) Total height H in mm	25	40	35	35	35	38, 42
扳手开口尺寸 (mm) Spanner size SW in mm	17	17/20	24	24	24	32

650系列喷嘴雾化流量表 (以16°C水为例)

Performance data of model 650, water flow rate at 16 °C

型号/尺寸 Model/size	对应孔宽 (mm) Corresponds to an orifice (in mm)	流量 (l/min) Flow rate in l/min at								
		0.5 bar	1 bar	2 bar	3 bar	4 bar	6 bar	8 bar	10 bar	20 bar
650/0	0.60	0.16	0.23	0.33	0.4	0.46	0.56	0.65	0.73	1.03
	0.70	0.20	0.29	0.41	0.5	0.57	0.70	0.81	0.91	1.29
	0.85	0.32	0.46	0.65	0.8	0.92	1.13	1.30	1.46	2.06
	1.10	0.41	0.57	0.81	1.0	1.15	1.41	1.63	1.83	2.58
	1.20	0.61	0.87	1.22	1.5	1.73	2.12	2.45	2.75	3.87
	1.40	0.81	1.15	1.63	2.0	2.31	2.83	3.26	3.65	5.15
650/1	1.50	1.02	1.44	2.04	2.5	2.89	3.55	4.08	4.57	6.45
	1.10	0.41	0.57	0.81	1.0	1.15	1.41	1.63	1.83	2.58
	1.20	0.61	0.87	1.22	1.5	1.73	2.12	2.45	2.75	3.87
	1.40	0.81	1.15	1.63	2.0	2.31	2.83	3.26	3.65	5.15
	1.50	1.02	1.44	2.04	2.5	2.89	3.55	4.08	4.57	6.45
	1.70	1.20	1.73	2.45	3.0	3.46	4.24	4.88	5.48	7.74
650/2	2.20	2.04	2.88	4.08	5.0	5.75	7.05	8.15	9.15	12.9
	2.70	3.06	4.32	6.12	7.5	8.60	10.60	12.2	13.7	19.4
	3.00	4.08	5.75	8.16	10	11.55	14.15	16.32	18.28	25.8
	3.80	6.15	8.70	12.2	15	17.30	21.20	24.40	27.40	38.7
	4.30	8.20	11.50	16.3	20	23.10	28.30	32.60	36.50	51.6
	4.80	10.2	14.40	20.4	25	28.9	35.5	40.8	45.7	64.5
650/3	5.30	12.0	17.30	24.5	30	34.6	42.4	48.8	54.8	77.4
	6.10	16.3	22.0	32.7	40	46.2	56.6	65.3	73.0	103
	6.80	20.4	28.8	40.8	50	57.7	70.7	81.5	91	129
650/4	8.40	30.6	43.2	61.2	75	86.0	106	122	137	194
	9.70	40.8	57.5	81.6	100	115	141	163	182	258

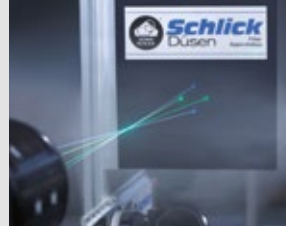
如有技术变更,恕不另行通知。

相位多普勒测量技术 PDA measurement technology

雾化效果可测量

Measurable success

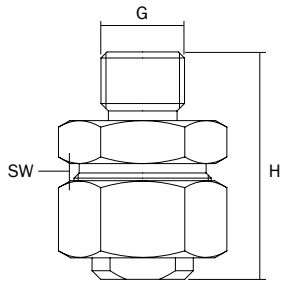
SCHLICK测量系统采用双相位激光多普勒测试原理(5瓦氩离子激光器), 精准测量雾化液滴颗粒和其流动特性。



The SCHLICK measurement system, a drop measurement device designed according to the dual PDA principle (PDA = Phase-Doppler Anemometry), uses a 5-watt (argon-ionic) continuous wave laser.

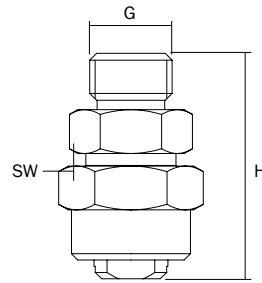
650/0小尺寸喷嘴

Model 650/0 small mounting



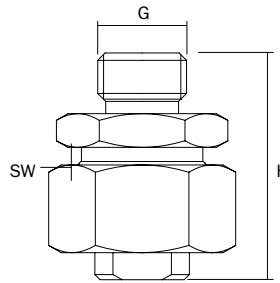
650/0正常尺寸喷嘴

Model 650/0 normal mounting



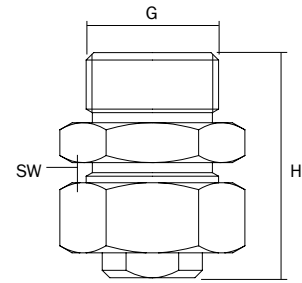
650/1-3系列喷嘴

Model 650/1-3



650/4喷嘴

Model 650/4



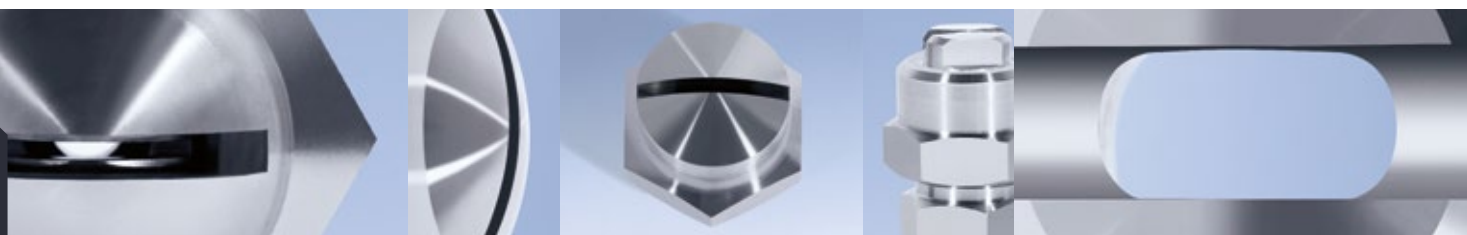
650系列喷嘴雾化流量表 (以20°C压缩空气为例)

Performance data of model 650, compressed air flow rate at 20 °C

型号/尺寸 Model/size	对应孔宽 (mm) Corresponds to an orifice (in mm)	流量 (Nm ³ /h) Flow rate in Nm ³ /h						
		1 bar (ü) 1 bar (g)	2 bar (ü) 2 bar (g)	3 bar (ü) 3 bar (g)	4 bar (ü) 4 bar (g)	5 bar (ü) 5 bar (g)	6 bar (ü) 6 bar (g)	7 bar (ü) 7 bar (g)
650/0	0.60	0.4	0.6	0.8	1.0	1.2	1.4	1.6
	0.70	0.5	0.8	1.0	1.3	1.5	1.8	2.0
	0.85	0.8	1.2	1.6	2.0	2.4	2.8	3.2
	1.10	1.0	1.5	2.0	2.5	3.0	3.5	4.0
	1.20	1.5	2.2	3.0	3.7	4.5	5.2	6.0
	1.40	2.0	3.0	4.0	5.0	6.0	7.0	8.0
650/1	1.50	2.5	3.7	5.0	6.2	7.5	8.7	10.0
	1.10	1.0	1.5	2.0	2.5	3.0	3.5	4.0
	1.20	1.5	2.2	3.0	3.7	4.5	5.2	6.0
	1.40	2.0	3.0	4.0	5.0	6.0	7.0	8.0
	1.50	2.5	3.7	5.0	6.2	7.5	8.7	10
	1.70	3.0	4.5	6.0	7.5	9.0	10.5	12
650/2	2.20	5.0	7.5	10	12.5	15	17.5	20
	2.70	7.5	11.2	15	18.7	22	26	30
	3.00	10	15	20	25	30	35	40
	3.80	15	22	30	37	45	52	60
	4.30	20	30	40	50	60	70	80
	650/3	4.80	25	37	50	62	75	87
5.30		30	45	60	75	90	105	120
6.10		40	60	80	100	120	140	160
650/4	6.80	50	75	100	125	150	175	200
	8.40	75	112	150	187	225	260	300
	9.70	100	150	200	250	300	350	400

具体技术参数

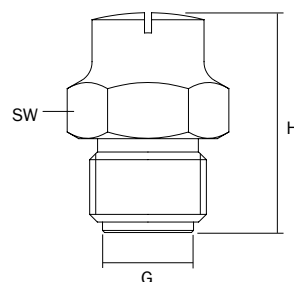
Technical Details



651系列喷嘴尺寸

Dimensions of model 651

Größe Size	1	2	3	4	5	6	7	8
螺纹规格 Connector ISO 228 G	1/8	1/4	3/8	1/2	3/4	1	1 1/4	1 1/2
总长H (mm) Total height H in mm	21	26	32	34	46	53	57	68
扳手开口尺寸 (mm) Spanner size SW in mm	14	17	20	27	32	41	50	55



651系列喷嘴雾化流量表 (以16°C水为例)

Performance data of model 651, water flow rate at 16 °C

型号/尺寸 Model/size	对应孔宽 (mm) Corresponds to an orifice (in mm)	流量 (l/min) Flow rate in l/min at								
		0.5 bar	1 bar	2 bar	3 bar	4 bar	6 bar	8 bar	10 bar	20 bar
651/1	1.7	1.20	1.7	2.45	3	3.4	4.2	4.9	5.5	7.70
651/2	2.4	2.45	3.5	4.90	6	6.9	8.5	9.8	11.0	15.5
651/3	3.4	4.90	7.0	9.80	12	13.8	17.0	19.6	21.9	31.0
651/4	4.3	8.20	11.5	16.3	20	23.1	28.3	32.6	36.5	51.6
651/5	6.8	20.4	28.8	40.8	50	57.5	70.5	81.5	91.0	129

651系列喷嘴雾化流量表 (以20°C压缩空气为例)

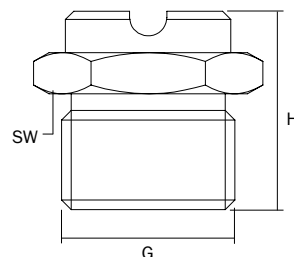
Performance data of model 651, compressed air flow rate at 20 °C

型号/尺寸 Model/size	对应孔宽 (mm) Corresponds to an orifice (in mm)	流量 (Nm³/h) Flow rate in Nm³/h						
		1 bar (ü) 1 bar (g)	2 bar (ü) 2 bar (g)	3 bar (ü) 3 bar (g)	4 bar (ü) 4 bar (g)	5 bar (ü) 5 bar (g)	6 bar (ü) 6 bar (g)	7 bar (ü) 7 bar (g)
651/1	1.7	3	4.8	6.4	8.0	9.6	11.2	12.8
651/2	2.4	6	9.7	13.0	16.2	19.5	22.7	26.0
651/3	3.4	12	19.5	26.0	32.0	39.0	45.0	52.0
651/4	4.3	20	33.0	44.0	55.0	66.0	77.0	88.0
651/5	6.8	50	80.0	106.0	132.0	160.0	185.0	212.0

655系列喷嘴尺寸

Dimensions of model 655

尺寸 Size	1	2	3	4	5	6	7	8
螺纹规格 Connector ISO 228 G	1/4	1/4	3/8	1/2	3/4	1	1 1/2	2
总长H (mm) Total height H in mm	15	15	19	24	30	35	45	55
扳手开口尺寸 (mm) Spanner size SW in mm	17	17	20	24	32	41	60	70



SCHLICK作为一家全球领先的喷嘴制造商,一直为客户提供高质量的标准解决方案,当然也可以根据客户要求,设计开发、定制喷嘴,即便是多品种小批量。

As one of the leading spray nozzle manufacturers in Europe, we can offer both high quality standard solutions and are in the position of developing customised products for individual tasks as fast as possible, even for small production runs.

655系列喷嘴雾化流量表 (以16°C水为例)
Performance data of model 655, water flow rate at 16 °C

型号/尺寸 Model/size	对应孔宽 (mm) Corresponds to an orifice (in mm)	流量 (l/min) Flow rate in l/min at								
		0.5 bar	1 bar	2 bar	3 bar	4 bar	6 bar	8 bar	10 bar	20 bar
655/1	1.2	0.61	0.87	1.22	1.5	1.73	2.12	2.45	2.75	3.87
	1.4	0.81	1.15	1.63	2.0	2.31	2.83	3.26	3.65	5.15
	1.5	1.02	1.44	2.04	2.5	2.89	3.55	4.08	4.75	6.45
	2.2	2.04	2.88	4.08	5.0	5.75	7.05	8.15	9.15	12.9
655/2	2.7	3.06	4.32	6.12	7.5	8.60	10.6	12.2	13.7	19.4
	3.0	4.08	5.75	8.16	10	11.5	14.1	16.3	18.3	25.8
	3.8	6.15	8.70	12.25	15	17.3	21.2	24.4	27.4	38.7
655/3	4.3	8.20	11.5	16.30	20	23.1	28.3	32.6	36.5	51.6
	4.8	10.2	14.4	20.4	25	28.9	35.5	40.8	45.7	64.5
655/4	5.3	12.0	17.3	24.5	30	34.6	42.4	48.8	54.8	77.4
	6.1	16.3	23.0	32.7	40	46.2	56.6	65.3	73.0	103.2
	6.8	20.4	28.8	40.8	50	57.5	70.5	82	91	129
655/5	8.4	30.6	43.2	61.2	75	86.0	106	122	137	194
	9.7	40.8	57.5	81.5	100	115	141	163	182	258
	10.0	51.0	72.0	110	125	144	177	210	228	324
	12.0	61.5	87.0	122	150	173	212	244	274	387

655系列喷嘴雾化流量表 (以20°C压缩空气为例)
Performance data of model 655, compressed air flow rate at 20 °C

型号/尺寸 Model/size	对应孔宽 (mm) Corresponds to an orifice (in mm)	流量 (Nm³/h) Flow rate in Nm³/h						
		1 bar (ü) 1 bar (g)	2 bar (ü) 2 bar (g)	3 bar (ü) 3 bar (g)	4 bar (ü) 4 bar (g)	5 bar (ü) 5 bar (g)	6 bar (ü) 6 bar (g)	7 bar (ü) 7 bar (g)
655/1	1.2	1,5	2,2	3	3,7	4,5	5,2	6
	1.4	2,0	3,0	4	5,0	6,0	7,0	8
	1.5	2,5	3,7	5	6,3	7,5	8,7	10
	2.2	5,0	7,5	10	12,5	15	17	20
655/2	2.7	7,5	11,2	15	18,7	22	26	30
	3.0	10	15	20	25	30	35	40
	3.8	15	22	30	37	45	52	60
655/3	4.3	20	30	40	50	60	70	80
	4.8	25	37	50	62	75	87	100
	5.3	30	45	60	75	90	105	120
655/4	6.1	40	60	80	100	120	140	160
	6.8	50	75	100	125	150	170	200
	8.4	75	112	150	187	225	260	300
655/5	9.7	100	150	200	250	300	350	400
	10.0	125	188	250	310	375	437	500
	12.0	150	225	300	375	450	525	600

如需比655/5更大喷嘴的流量曲线或者蒸汽雾化流量曲线,请联系我们
 Flow rates for larger nozzles and saturated steam available on request.

产品目录
 Product Overview
 两液体喷嘴
 Two-Substance
 Nozzles
 防飞溅/专业包衣技术
 ABC/PCA Technique
 三/四液体喷嘴
 Three-/Four-
 Substance Nozzles
 多喷头技术
 Multispray
 喷嘴杆
 Insertion Pipes
 喷嘴头
 Nozzle Heads
 空心喷嘴
 Full-Cone Nozzles
 空心锥喷嘴
 Hollow-Cone Nozzles
 硬质合金喷嘴
 Carbide Nozzles
 高速喷嘴
 Flat-Jet Nozzles
 喷射喷嘴
 Smooth-Jet Nozzles
 混合喷嘴
 Mixing Nozzles
 拉瓦尔喷嘴
 Laval Nozzles
 清洗喷嘴
 Cleaning Nozzles
 喷嘴附件
 Accessories
 测试中心
 Test Center

SCHLICK 客户定制 SCHLICK Customized Designs

可按客户要求定制， 小批量生产

作为一家全球领先的喷嘴制造商，SCHLICK一直为客户提供高质量的标准解决方案。

当然，凭借高精度的制造能力以及丰富的研发经验，SCHLICK也可根据客户要求设计开发、定制喷嘴。

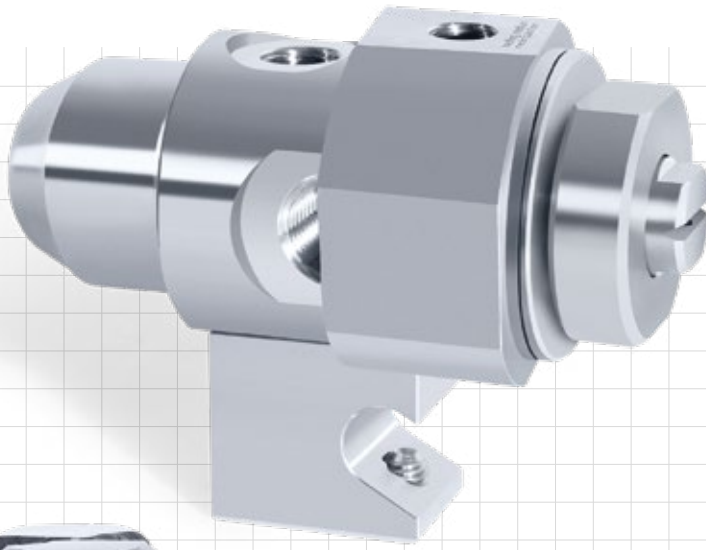
即使客户需求数量很少、交期短

Custom and individual designs, small series

As a leading nozzle manufacturer, high quality standardised solutions are business-as-usual for SCHLICK.

However, thanks to the breadth of its manufacturing capacities and comprehensive expertise, SCHLICK can also produce custom and individual designs for specific applications.

No matter how small the series or short the timeframe.



650/1 Form 7-1 S40喷嘴

此喷嘴采用标准喷嘴配件,但配备了加热保温套,而且在喷嘴口的前端有密封装置,所以可以实现在线更换喷嘴口,适用于制药和食品行业,比如糖衣包衣。

The coating nozzle with heating jacket uses standard nozzle exit parts. Sealed upstream of the nozzle exit, it is therefore possible, amongst other things, to replace the nozzle exit when still under pressure. Optimised for pharmaceutical and food applications such as sugar coating etc.



650系列喷嘴

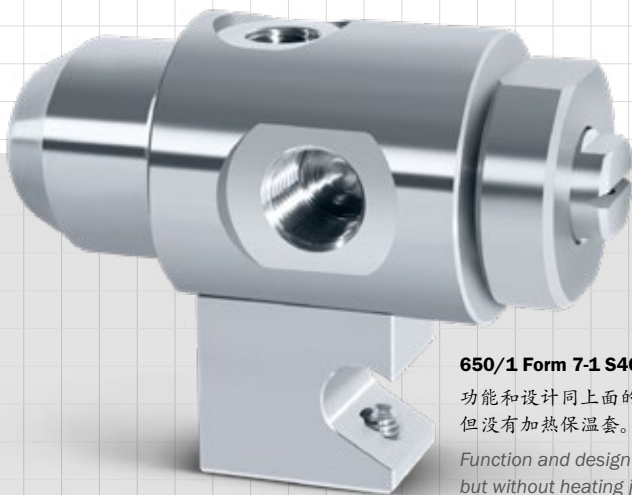
此系列的650喷嘴适合直接焊接安装到管道上等。

The mounting of the proven SCHLICK model 650 is suited to being soldered or welded to pipes etc.

656系列喷嘴

此喷嘴和球头整合到一起,这样喷嘴口方向可以任意调整。

The special design with integrated ball joint allows constant movement of the nozzle exit in all directions.



650/1 Form 7-1 S40喷嘴

功能和设计同上面的S40一样,但没有加热保温套。

Function and design as above but without heating jacket.



产品目录
Product Overview

两液体喷嘴
Two-Substance
Nozzles

防滴漏/专业包衣技术
ABC/PCA Technique

三/四液体喷嘴
Three-/Four-
Substance Nozzles

多喷头技术
Mulspray

喷嘴杆
Insertion Pipes

喷嘴头
Nozzle Heads

空心锥喷嘴
Full-Cone Nozzles

空心锥喷嘴
Hollow-Cone Nozzles

硬质合金喷嘴
Carbide Nozzles

扁平喷嘴
Flat-Jet Nozzles

喷射喷嘴
Smooth-Jet Nozzles

混合喷嘴
Mixing Nozzles

拉瓦尔喷嘴
Laval Nozzles

清洗喷嘴
Cleaning Nozzles

喷嘴附件
Accessories

测试中心
Test Center