

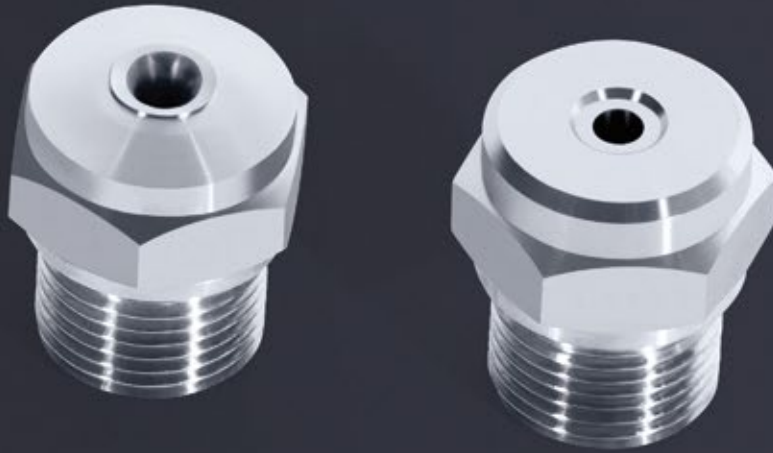
SCHLICK 551-565 系列喷嘴 SCHLICK Series 551-565

Mod. 551-565



● 雾化非常均匀，雾化形状为圆形或者矩形，也用于雾化面积较大的场合

Very even, circular or rectangular full cone also provides optimal spray results for large surfaces



SCHLICK 雾化技术

100%德国制造

SCHLICK防堵设计的实心锥喷嘴应用广泛,雾化一致性好

The blockage-resistant SCHLICK full cone nozzles are suited to very diverse applications and ensure reproducible results

喷嘴尾部可选各种螺纹,方便安装到法兰或容器壁上

Also available with an rear screw thread for easy fitting into a flange or container wall

材质

- 耐酸不锈钢
- 耐高温不锈钢
- 黄铜
- 灰口铸铁
- 铬镍合金
- 铂铱合金
- 聚丙烯
- 聚四氟乙烯
- 聚氯乙烯
- 聚偏氟乙烯
- 超分子量聚乙烯
- 碳化硅
- 钽
- 钛
- 其他客户指定材料

Materials

- Acid resistant stainless steel
- Heat resistant stainless steel
- Brass
- Grey cast iron
- Inconel
- Platinum-Iridium
- PP
- PTFE
- PVC
- PVDF
- RCH 1000
- SiSiC
- Tantalum
- Titanium
- Custom materials available on request

产品目录
Product Overview

两液体喷嘴
Two-Substance
Nozzles

防滴漏/专业包壳材料技术
ABC/PCA Technique

三/四液体喷嘴
Three-/Four-
Substance Nozzles

多喷头技术
Multispray

喷嘴杆
Insertion Pipes

喷嘴头
Nozzle Heads

实心锥喷嘴
Full Cone Nozzles

空心锥喷嘴
Hollow Cone Nozzles

硬质合金喷嘴
Carbide Nozzles

扁平喷嘴
Flat Spray Nozzles

喷射喷嘴
Smooth-Jet Nozzles

混合喷嘴
Mixing Nozzles

拉瓦尔喷嘴
Laval Nozzles

清洗喷嘴
Cleaning Nozzles

喷嘴附件
Accessories

测试中心
Test Center

SCHLICK 551-565系列喷嘴 SCHLICK Series 551-565



此系列喷嘴处理量范围大、雾化均匀

此系列喷嘴配合Schlick特别开发的旋流装置,能获得更好更大的雾化面积和更均匀的雾化液滴,特别适合要求雾化面积大的场合。

此系列喷嘴型号特别多,处理量从0.5升/分钟到60000升/分钟(3bar下),Schlick提供的实心锥喷嘴处理大小数据,一般都是指压力差在3bar的情况下。

Broad capacity spectrum plus extremely homogenous spray pattern

Using specially developed and very varied swirl units SCHLICK full cone nozzles produce an extremely even full cone. This makes the nozzles much better suited for the even spraying of large surfaces.

A very large variety of models and sizes allows an air flow rate bandwidth of 0.5 – 60000 l/min at 3 bar. The full cone nozzle is classified and characterised by air flow at a differential pressure of 3 bar (nominal power at 3 bar).



553系列喷嘴

此系列喷嘴可实现圆锥形或者矩形雾化,防堵设计,涡流装置固定牢靠,流体压力即使有波动,喷嘴也能实现极其均匀的雾化效果。

标准雾化角度: 90°。也可提供雾化角度为30°、45°和60°的喷嘴(较小的喷嘴,对应的雾化面积也小,具体请参照参数表)。

SCHLICK Model 553

is available with centric or rectangular spray image. The **blockage-resistant** nozzle provides extremely even atomisation even with fluctuating liquid pressure. The swirl unit is firmly fixed.

Standard spray cone: 90°. 30°, 45° and 60° are also available (smaller standard spray cone with smaller nozzles, see performance diagram).



556系列喷嘴

此系列喷嘴可实现圆锥形或者矩形雾化,涡流装置固定牢靠,即使雾化面积较大,也能实现均匀的雾化效果。

标准雾化角度: **120°**

SCHLICK Model 556

is available with centric or rectangular spray image. Model 556 provides even spraying, even on large surfaces. The swirl unit is firmly fixed.

Standard spray cone: 120°

如有技术变更,恕不另行通知。

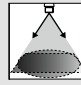
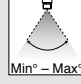
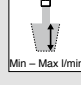
创新性产品设计

- 安装拆卸非常简单
- 防堵设计
- 处理量：0.5-60000升/分钟
- 应用范围非常广泛
- 终身售后服务保障
- 免费产品设计和技术支持

Innovative product design for perfect spraying:

- Extremely easy installation/de-installation
- Blockage-resistant
- Capacities of 0.5 – 60000l/min
- Very wide range of applications
- Long-term after-sales warranty
- Engineering free of charge

	雾化形状	圆锥形或者矩形
	雾化角度：	330° - 120° (定制喷嘴, 可实现5°-140°)
	处理量：	0.5-60000升/分钟(3bar时)

	Spray pattern:	circular or square full-cone
	Spray angle:	30° - 120° (customized designs from 5° to 140° available)
	Capacity:	0.5 - 60000 l/min at 3 bar



553 S 和 556 S 系列

性能和553或556系列相同, 增配了一个可拆卸的涡流装置, 在雾化易堵流体的时候, 方便清洁。

SCHLICK Model 553 S and 556 S
Characteristics are as for SCHLICK model 553 or 556 but with an additional removable swirl unit for quick cleaning when using media that tend to cause blockages.



553 K 和 556 K 系列

性能和553或556系列相同, 头部增加了螺纹, 便于安装到容器上、法兰上或管道

Model 553 K and 556 K
Characteristics are as for SCHLICK model 553 or 556 but with an additional head screw thread for screwing into a container, flange or pipe.



553 SK 和 556 SK 系列

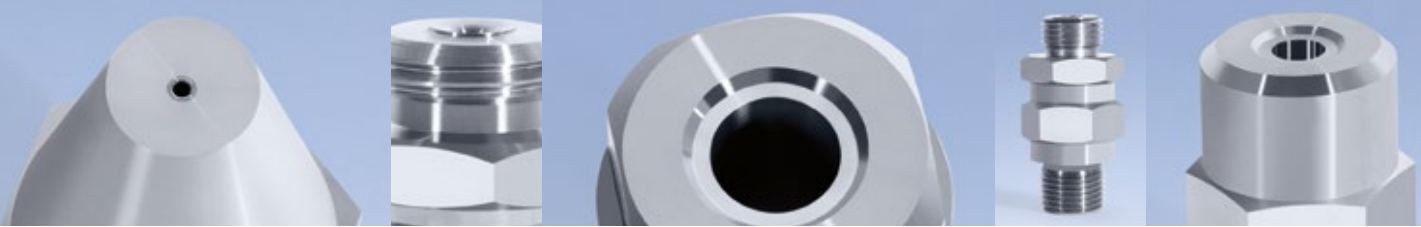
性能和553 S或556 S系列相同, 头部增加了螺纹, 便于安装到容器上、法兰上或管道上。

Model 553 SK and 556 SK
Characteristics are as for SCHLICK model 553 S or 556 S but with an additional head screw thread for screwing into a container, flange or pipe.

产品目录
Product Overview
两液体喷嘴
Two-Substance Nozzles
防滴漏/专业包装技术
ABC/PCA Technique
三/四液体喷嘴
Three-/Four-Substance Nozzles
多喷头技术
Multispray
喷射杆
Injection Pipes
喷嘴头
Nozzle Heads
空心喷嘴
Full Cone Nozzles
空心喷嘴
Hollow-Cone Nozzles
硬质合金喷嘴
Carbide Nozzles
扁平喷嘴
Flat Spray Nozzles
喷射喷嘴
Smooth-Jet Nozzles
混合喷嘴
Mixing Nozzles
拉瓦尔喷嘴
Laval Nozzles
清洗喷嘴
Cleaning Nozzles
喷嘴附件
Accessories
测试中心
Test Center

SCHLICK 551-565系列

SCHLICK Series 551-565



553, 556, 553 K, 556 K系列喷嘴尺寸

Dimensions of model 553, 556, 553 K, 556 K

Size Size	0	1	2	3	4	5	6	7	8
螺纹规格(英制) Connector ISO 228 G	1/8	1/4	3/8	1/2	3/4	1	1 1/4	1 1/2	2
总长H(mm) Total height H in mm	17	18	25	31/38*	54	70	80	95	120
孔径D(mm) Diameter D in mm	13	16	19	26	31	40	42	48	60
扳手开口尺寸(mm) Spanner size SW in mm	14	17	20	27	32	41	32	41	46
喷嘴重量(kg) Weight per unit approx. in kg	0.015	0.020	0.040	0.1	0.25	0.45	0.54	0.825	1.35

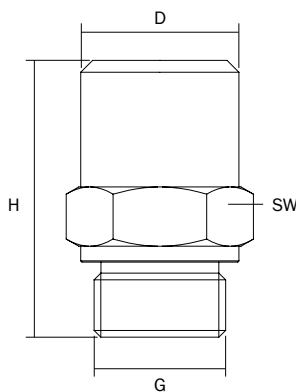
如需Size9-17喷嘴尺寸, 请联系我们, 尺寸K可按客户要求定制,

*取决于名义流量大小

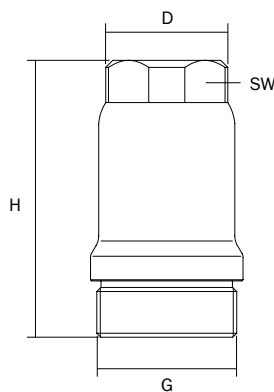
Dimensions for sizes 9-17 and dimension K available on request

* depends on nominal throughput

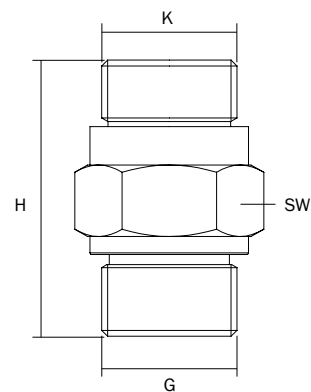
553, 556系列



553, 556系列(从Size 6开始)
Mod. 553, 556 (from size 6)



553 K, 556 K系列



如有技术变更, 恕不另行通知。

SCHLICK – 为雾化解决方案而生

神奇的SCHLICK雾化技术
Clever SCHLICK technology

从设备设计规划到实际批量生产,
SCHLICK都能提供完美解决方案

SCHLICK know-how – from planning
to installation. We would be
delighted to assist in the optimisation
of your technical and operational
results.

553 S, 556 S, 553 SK, 556 SK系列喷嘴尺寸 Dimensions of model 553 S, 556 S, 553 SK, 556 SK

Size Size	0	1	2	3	4	5	6	7	8
螺纹规格(英制) Connector ISO 228 G	1/8	1/4	3/8	1/2	3/4	1	1 1/4	1 1/2	2
总长H(mm) Total height H in mm	30	32	43	53/62*	80	100			
孔径 D(mm) Diameter D in mm	13	16	19	26	31	40	42	48	60
扳手开口尺寸(mm) Spanner size SW in mm	14	17	20	27	32	41	32	41	46
喷嘴重量(kg) Weight per unit approx. in kg	0.015	0.020	0.040	0.1	0.25	0.45	0.54	0.825	1.35

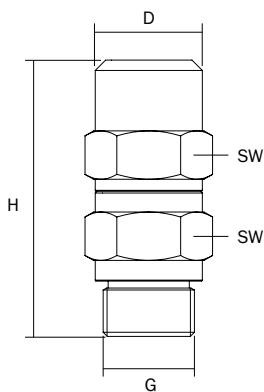
如需Size9-17喷嘴尺寸, 请联系我们, 尺寸K可按客户要求定制,

*取决于名义流量大小

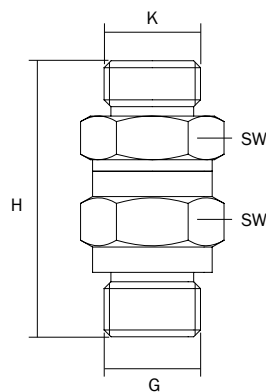
Dimensions for sizes 9-17 and dimension K available on request

* depends on nominal throughput

553 S, 556 S系列



553 SK, 556 SK系列



SCHLICK 551-565系列

SCHLICK Series 551-565



● **553系列和556 Size 6后续系列**
Design of the SCHLICK models 553
and 556 starting from size 6.

● 尖头设计的553系列喷嘴可以改成S系列(可拆卸的涡流装置, 便于清洁) 和K系列(头部增加螺纹, 便于安装到容器上、法兰上或管道上)。

SCHLICK model 553 with a narrow spray cone is equally available in the S designs (with removable swirl unit for quick cleaning when using media that tend to cause blockages) and K designs (with a head screw thread for screwing into a container, flange or pipe).

如有技术变更, 恕不另行通知。

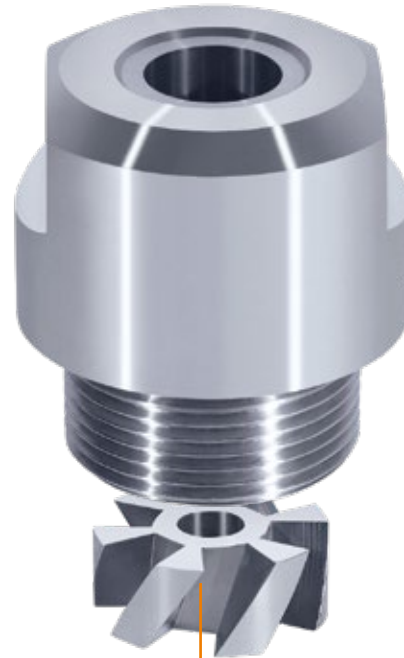
信任和质量是合作成功的基础,这不仅仅指我们的产品,也适用于我们的服务。如有需要,我们可向您提供喷嘴相关文件,如技术手册(包括图纸、流量图、安装和操作说明)、SCHLICK公司的相关证书以及喷嘴的材质说明。

Reliability and quality are the basis for successful cooperation with our international customers. This applies both to our products and to our service. If you wish, we will supply you with all necessary documentation such as technical handbooks for the nozzles (drawings, flow diagrams, installation and operating instructions) together with factory and material specifications.



新的565系列,处理量和标准款的553系列以及556系列中流量较小的型号相同,此外,565型配备了一个可拆卸的涡流装置(便于清洁)。标准雾化角度:30°、45°和60°
如需详细参数,请联系我们。

The new **SCHLICK model 565** offers the same air flow rate as the standard full cone nozzle models 553 and 556 **in a smaller design**. Additionally model 565 is fitted with a removable swirl unit for quick cleaning.
Standard spray cone: 30°, 45° and 60°
Performance data available on request.



同期新开发的565 S1系列,增加了实心锥喷嘴的应用范围,可用于大面积雾化,涡流装置被一个特别开发的涡流板所固定,标准雾化角度:30°、45°、60°和90°
如需详细参数,请联系我们。

The equally newly developed **SCHLICK model 565 S1** compliments the **reduced version** of the SCHLICK full cone nozzles for wide spray cone areas. To install this the swirl unit is replaced with a specially developed swirl pane (fixed). **Standard spray cone: 30°, 45°, 60° and 90°**
Performance data available on request.

产品目录
Product Overview

两液体喷嘴
Two-Substance
Nozzles

防滴漏/专业包装技术
ABC/PCA Technique

三/四液体喷嘴
Three-/Four-
Substance Nozzles

多头技术
Multispray

喷嘴杆
Insertion Pipes

喷嘴头
Nozzle Heads

实心锥喷嘴
Full Cone Nozzles

空心锥喷嘴
Hollow Cone Nozzles

硬质合金喷嘴
Carbide Nozzles

扁平喷嘴
Flat Spray Nozzles

喷射喷嘴
Smooth-Jet Nozzles

混合喷嘴
Mixing Nozzles

拉瓦尔喷嘴
Laval Nozzles

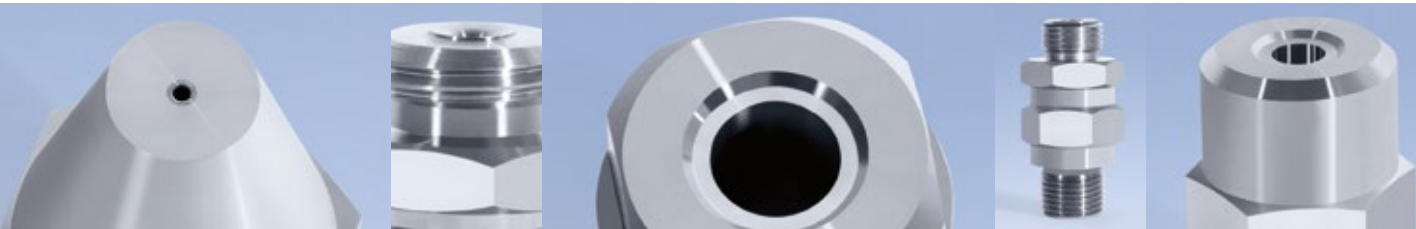
清洗喷嘴
Cleaning Nozzles

喷嘴附件
Accessories

测试中心
Test Center

SCHLICK 551-565系列

SCHLICK Series 551-565

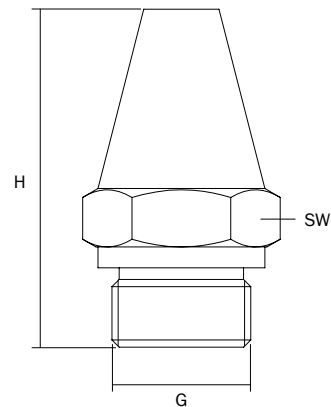


553系列喷嘴和带法兰的556系列喷嘴尺寸

Dimensions of model 553 and 556 with flange

Size Size	1	2	3	4	5	6	7	8
螺纹规格(英制) Connector ISO 228 G	1/4	3/8	1/2	3/4	1	1 1/4	1 1/2	2
总长H(mm) Total height H in mm	22	32	49	64	85	105	126	150
扳手开口尺寸(mm) Spanner size SW in mm	17	20	27	32	41	46	50	60

可选S或K系列设计, 如需Size 9以上的喷嘴图纸, 请联系我们。
Designs S or K available. Ask for drawings for sizes above Size 9.

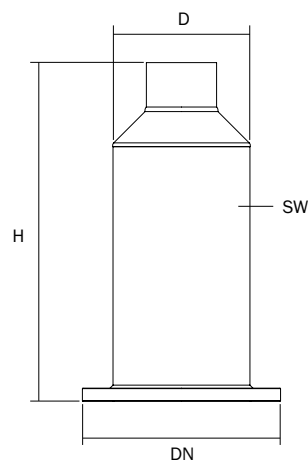


带法兰的553和556系列喷嘴尺寸

Dimensions of model 553 and 556 with flange

Size Size	13	14	15	16	17
法兰规格(DN) Connector DN	125.0	150.0	200.0	250.0	300.0
总长H(mm) Total height H in mm	310.0	385.0	520.0	660.0	780.0
孔径D(mm) Diameter D in mm	133.0	159.0	216.0	267.0	318.0
喷嘴重量(kg) Weight per unit approx. in kg	11.5	14.5	27.0	40.0	65.0

法兰可选欧标DIN或者美标ANSI, 螺纹可根据客户要求定制。
Flange to DIN or ANSI standards available. Screw fittings can be adapted to customer's requirements.



SCHLICK – 为雾化解决方案而生

神奇的SCHLICK雾化技术
Clever SCHLICK technology

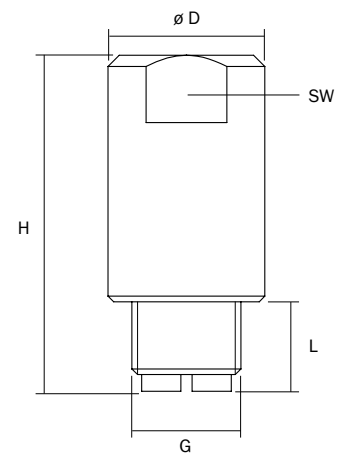
从设备设计规划到实际批量生产,
Schlick都能提供完美解决方案

SCHLICK know-how – from planning
to installation. We would be
delighted to assist in the optimisation
of your technical and operational
results.

565系列喷嘴尺寸

Dimensions of model 565

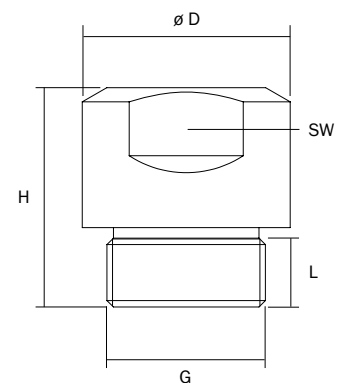
Size Size	3	4	5	6	7	8	9	10
螺纹规格(英制) Connector ISO 228 G	3/8	1/2	3/4	1	1 1/4	1 1/2	2	3
螺纹长度L(mm) Thread length L in mm	12	14	16	20	24	26	29	33
总长H(mm) Total height H in mm	42-55	51-71	62-93	84-126	87-143	102-154	115-200	190-290
孔径D(mm) Diameter D in mm	22	28	38	45	55	60	75	110
扳手开口尺寸(mm) Spanner size SW in mm	20	24	34	41	46	55	65	90



565 S1系列喷嘴尺寸

Dimensions of model 565 S1 Size

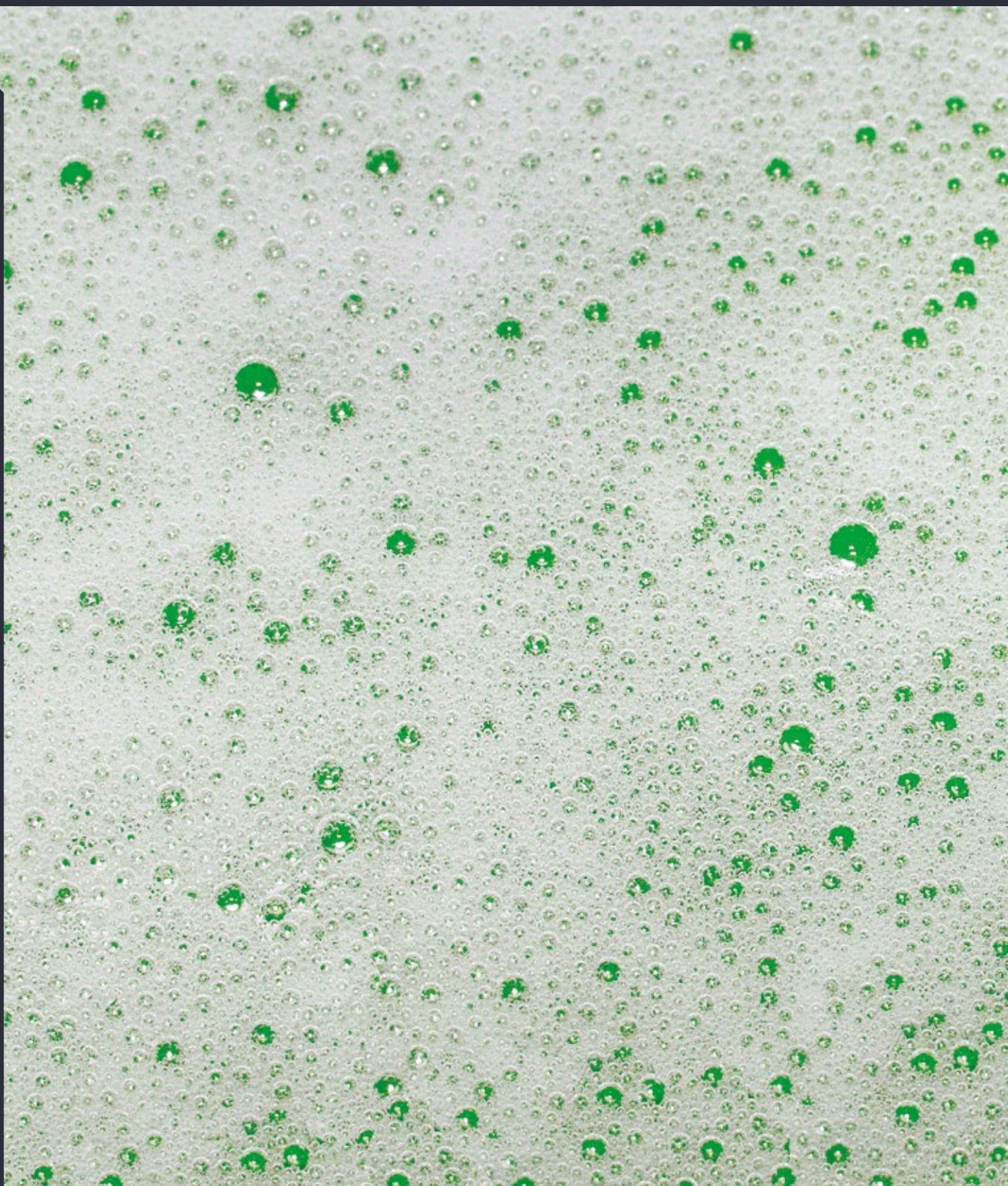
Size Size	3	4	5	6	7	8	9
螺纹规格(英制) Connector ISO 228 G	1/2	3/4	1	1 1/4	1 1/2	2	2 1/2
螺纹长度L(mm) Thread length L in mm	14	16	19	21	21	24	30
总长H(mm) Total height H in mm	38	45	50	58	62	70	85
孔径D(mm) Diameter D in mm	28	38	45	55	60	70	90
扳手开口尺寸(mm) Spanner size SW in mm	24	34	41	46	55	60	80



SCHLICK 551-565 系列喷嘴

SCHLICK Series 551-565

Mod. 551-565



压力式喷嘴/实心锥喷嘴
Pressure Nozzles / Full-Cone

如有技术变更,恕不另行通知。

应用

- 清洗
- 冷凝
- 冷却
- 消防
- 气体温度调节
- 气体冷却
- 加湿
- 定量
- 混合
- 工艺工程
- 喷雾干燥
- 洗涤

Applications

- Cleaning
- Condensation
- Cooling
- Fire protection
- Gas conditioning
- Gas cooling
- Humidifying
- Metering
- Mixing
- Process engineering
- Spray drying
- Washing

产品目录
Product Overview

两液体喷嘴
Two-Substance
Nozzles

防滴漏/专业包壳技术
ABC/PCA Technique

三/四液体喷嘴
Three-/Four-
Substance Nozzles

多喷头技术
Multispray

喷嘴杆
Insertion Pipes

喷嘴头
Nozzle Heads

空心锥喷嘴
Full Cone Nozzles

空心锥喷嘴
Hollow Cone Nozzles

硬质合金喷嘴
Carbide Nozzles

扁平喷嘴
Flat Spray Nozzles

喷射喷嘴
Smooth-Jet Nozzles

混合喷嘴
Mixing Nozzles

拉瓦尔喷嘴
Laval Nozzles

清洗喷嘴
Cleaning Nozzles

喷嘴附件
Accessories

测试中心
Test Center

SCHLICK 551-565系列 具体技术参数

Technical Details SCHLICK Series 551-565



553系列喷嘴和556系列喷嘴雾化参数表

Performance specification of model 553 (90°) and model 556 (120°)

Size	螺纹规格 (英制)	流量(l/min)									标准雾化角度	
Size	Thread size G ISO 228	Flow rate in l/min at									Standard spray angle	
		0.25 bar	0.5 bar	1 bar	2 bar	3 bar	4 bar	6 bar	8 bar	10 bar	Mod. 553	Mod. 556
0	1/8					0.5	0.56	0.68	0.78	0.86	45°	120°
						1.0	1.12	1.36	1.57	1.72	55°	120°
						1.5	1.68	2.04	2.34	2.58	65°	120°
						2.0	2.24	2.74	3.12	3.45	70°	120°
						2.5	2.80	3.40	3.90	4.30	75°	120°
1	1/4			1.80	2.45	3.0	3.4	4.1	4.7	5.2	80°	120°
				2.75	3.75	4.5	5.2	6.1	7.0	7.8	85°	120°
				3.6	4.9	6.0	6.8	8.2	9.4	10.4	90°	120°
			3.3	4.5	6.2	7.5	8.5	10.3	11.0	13.0	90°	120°
			4.0	5.5	7.5	9.0	10.5	12.3	14.0	15.6	90°	120°
2	3/8		4.0	5.5	7.5	9.0	10.5	12.3	14.0	15.6	90°	120°
		3.8	5.2	7.2	9.9	12.0	13.6	16.5	18.8	20.8	90°	120°
		4.8	6.6	9.0	12.3	15.0	16.8	20.4	23.4	25.8	90°	120°
		6.4	8.8	12.0	16.6	20.0	22.4	27.4	31.2	34.6	90°	120°
3	1/2	6.4	8.8	12.0	16.6	20.0	22.4	27.4	31.2	34.6	90°	120°
		8.0	11.0	15.0	20.0	25.0	28.0	34.0	39.0	43.0	90°	120°
		9.6	13.2	18.2	24.5	30.0	34.0	41.0	47.0	52.0	90°	120°
		11.2	15.4	21.1	29.0	35.0	40.0	48.0	54.6	60.7	90°	120°
		12.8	17.6	24.2	33.0	40.0	45.5	55.0	62.5	69.5	90°	120°
4	3/4	16	22	30	41	50	56	68	78	86	90°	120°
		19	26	36	49	60	68	82	94	104	90°	120°
		24	33	45	62	75	85	103	117	130	90°	120°
5	1	32	44	60	82	100	112	136	156	172	90°	120°
		40	55	75	103	125	142	171	195	216	90°	120°
6	1 1/4	48	66	90	124	150	170	205	234	260	90°	120°
		56	77	106	145	175	200	240	274	303	90°	120°

如需雾化角度大于120°的实心锥喷嘴资料(如551等系列),请联系我们。

Model 551 with wide angle (>120°) on request.

如有技术变更,恕不另行通知。

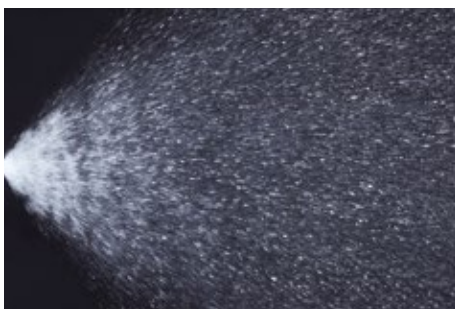
作为全球技术领先的喷嘴制造商,我们不仅能提供标准的高质量解决方案,也能根据客户的要求进行定制,即使项目时间短、需求量少。

As one of the leading spray nozzle manufacturers in Europe, we can offer both high quality standard solutions and are in the position of developing customised products for individual tasks as fast as possible, even for small production runs.

553系列喷嘴和556系列喷嘴雾化参数表
Performance specification of model 553 (90°) and model 556 (120°)

Size	螺纹规格 Thread size ISO 228	流量(l/min) Flow rate in l/min at									标准雾化角度 Standard spray angle	
		0.25 bar	0.5 bar	1 bar	2 bar	3 bar	4 bar	6 bar	8 bar	10 bar	Mod. 553	Mod. 556
7	1 1/2	64	88	121	166	200	224	274	312	346	90°	120°
		80	110	152	208	250	284	342	390	433	90°	120°
8	2	96	132	182	245	300	340	410	470	520	90°	120°
		128	176	242	330	400	455	550	625	695	90°	120°
9	2 1/2	160	220	302	415	500	568	685	780	865	90°	120°
		192	264	362	495	600	680	825	940	1040	90°	120°
10	3	240	330	452	620	750	850	1030	1170	1300	90°	120°
		28	395	545	745	900	1050	1230	1400	1560	90°	120°
11	4	384	525	725	995	1200	1365	1650	1880	2080	90°	120°
		480	660	900	1240	1500	1700	2050	2340	2600	90°	120°
		560	770	1060	1450	1750	2000	2400	2740	3030	90°	120°
12	5	640	880	1210	1660	2000	2240	2740	3120	3460	90°	120°
		800	1100	1520	2080	2500	2840	3420	3900	4330	90°	120°
13	DN 125	800	1100	1520	2080	2500	2840	3420	3900	4330	90°	120°
		960	1320	1820	2450	3000	3400	4100	4700	5200	90°	120°
14	DN 150	1120	1540	2110	2900	3500	4000	4800	5460	6070	90°	120°
		1280	1760	2420	3300	4000	4550	5500	6250	6950	90°	120°
15	DN 200	1600	2200	3020	4150	5000	5680	6850	7800	8650	90°	120°
		1920	2640	3620	4950	6000	6800	8250	9400	10400	90°	120°
		2400	3300	4520	6200	7500	8500	10300	11700	13000	90°	120°
16	DN 250	3200	4400	6040	8300	10000	11360	13700	15600	17300	90°	120°
		3840	5250	7250	9950	12000	13650	16500	18800	20800	90°	120°
17	DN 300	4500	6150	8450	11600	14000	15900	19200	21800	24200	90°	120°
		5440	7500	10300	14100	17000	19300	23300	26600	29400	90°	120°

533系列喷嘴雾化图
Spray SCHLICK Modell 553



流量数据是压差为3 bar时的标称容量(l/min),
 基于16°C的水测得的,
 该表数据仅适用于标准喷射角度情况。
 Flow rate capacity related to water at 16 °C.
 The nozzles are identified by the nominal capacity in l/min
 at a liquid pressure differential of 3 bar.
 The table is only valid for standard spray angles.

产品目录
 Product Overview

两液体喷嘴
 Two-Substance
 Nozzles

防滴漏/专业包装技术
 ABC/PCA Technique

三/四液体喷嘴
 Three-/Four-
 Substance Nozzles

多喷头技术
 Multispray

喷射杆
 Insertion Pipes

喷嘴头
 Nozzle Heads

空心锥喷嘴
 Full-Cone Nozzles

空心锥喷嘴
 Hollow-Cone Nozzles

硬质合金喷嘴
 Carbide Nozzles

扁平喷嘴
 Flat Spray Nozzles

喷射喷嘴
 Smooth-Jet Nozzles

混合喷嘴
 Mixing Nozzles

拉瓦尔喷嘴
 Laval Nozzles

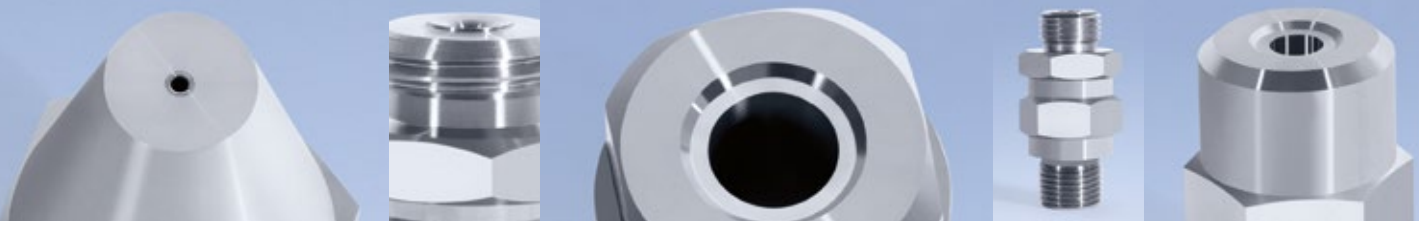
清洗喷嘴
 Cleaning Nozzles

喷嘴附件
 Accessories

测试中心
 Test Center

SCHLICK 551-565系列 具体技术参数

Technical Details SCHLICK Series 551-565



553系列喷嘴雾化参数表(雾化角度为60°时)

Performance specification of model 553 with 60° spray angle

Size	螺纹规格 Thread size G ISO 228	流量(l/min) Flow rate in l/min at										
		0.5 bar	1 bar	1.5 bar	2 bar	2.5 bar	3 bar	4 bar	6 bar	8 bar	10 bar	
0	1/8		0.29	0.35	0.41	0.46	0.50	0.58	0.71	0.82	0.92	
			0.57	0.70	0.81	0.90	1.00	1.14	1.40	1.61	1.80	
			0.87	1.07	1.23	1.38	1.50	1.74	2.13	2.46	2.75	
			1.16	1.42	1.64	1.83	2.00	2.40	2.84	3.28	3.67	
			1.44	1.76	2.04	2.28	2.50	2.88	3.53	4.07	4.55	
1	1/4		1.38	1.70	1.96	2.19	2.40	2.77	3.40	3.92	4.38	
			1.80	2.20	2.53	2.83	3.10	3.58	4.40	5.05	5.65	
			2.60	3.18	3.67	4.10	4.50	5.20	6.35	7.35	8.20	
			2.04	2.89	3.54	4.09	4.57	5.00	5.78	7.08	8.17	9.14
			2.45	3.46	4.25	4.90	5.46	6.00	6.90	8.50	9.80	10.90
2	3/8		2.45	3.46	4.25	4.90	5.46	6.00	6.90	8.50	9.80	10.90
			3.25	4.60	5.65	6.55	7.30	8.00	9.25	11.30	13.00	14.60
			4.10	5.75	7.00	8.15	9.10	10.00	11.60	14.30	16.40	18.30
			5.40	7.60	9.30	10.80	12.00	13.20	15.20	18.70	21.60	24.00
3	1/2		5.40	7.60	9.30	10.80	12.00	13.20	15.20	18.70	21.60	24.00
			6.80	9.60	11.80	13.70	15.30	16.70	19.30	23.70	27.40	30.50
			8.20	11.50	14.00	16.30	18.20	20.00	23.20	28.20	32.60	36.50
			9.50	13.40	16.40	19.00	21.20	23.20	26.80	32.80	37.80	42.30
			10.80	15.30	18.70	21.60	24.20	26.50	30.60	37.50	43.30	48.40
4	3/4		13.60	19.20	23.50	27.20	30.40	33.30	38.40	47.00	54.40	60.60
			16.30	23.10	28.30	32.70	36.50	40.00	46.20	56.50	65.40	73.00
			20.40	29.00	35.40	41.00	45.70	50.00	57.80	71.00	82.00	91.50
5	1		27.00	38.00	46.50	54.00	60.00	66.00	76.00	93.00	107.00	120.00
			34.00	48.00	58.50	68.00	76.00	83.00	96.00	117.00	135.00	151.00
6	1 1/4		41.00	57.50	70.50	81.50	91.50	100.00	115.00	141.00	164.00	183.00
			54.00	76.50	94.00	108.00	121.00	133.00	153.00	188.00	216.00	243.00
7	1 1/2		68.00	96.00	118.00	136.00	152.00	167.00	193.00	236.00	272.00	305.00
			81.00	115.00	141.00	163.00	182.00	200.00	231.00	283.00	326.00	365.00
8	2		109.00	154.00	189.00	218.00	244.00	267.00	308.00	378.00	435.00	487.00
			120.00	175.00	210.00	245.00	270.00	300.00	350.00	450.00	500.00	540.00

如有技术变更,恕不另行通知。

给客户 提供喷嘴和雾化解决方案的同时,我们还确保为客户 提供良好的售后服务,喷嘴维修和更新服务,所有喷嘴和备件 设计图纸都会长期保存,紧急情况下,能快速为客户提供可靠 的配件。

As well as competent advice and its inception, you can profit from an efficient after-sales service that guarantees long-term supply of all products. We carry out both repair and conversion of SCHLICK spray nozzles, and in emergency, we can supply spare parts quickly and reliably.

553系列喷嘴雾化参数表(雾化角度为45°时)
Performance specification of model 553 with 45° spray angle

Size	螺纹规格 Thread size G ISO 228	流量(l/min) Flow rate in l/min at										
		0.5 bar	1 bar	1.5 bar	2 bar	2.5 bar	3 bar	4 bar	6 bar	8 bar	10 bar	
0	1/8		0.29	0.35	0.41	0.46	0.50	0.58	0.71	0.82	0.92	
			0.57	0.70	0.81	0.90	1.00	1.14	1.40	1.61	1.80	
			0.87	1.07	1.23	1.38	1.50	1.74	2.13	2.46	2.75	
			1.16	1.42	1.64	1.83	2.00	2.40	2.84	3.28	3.67	
1	1/4		1.44	1.76	2.04	2.28	2.50	2.88	3.53	4.07	4.55	
			0.80	0.98	1.13	1.26	1.36	1.60	1.95	2.26	2.52	
			1.15	1.41	1.63	1.82	2.00	2.31	2.83	3.27	3.65	
			1.44	1.76	2.04	2.28	2.50	2.88	3.53	4.07	4.55	
2	3/8		1.26	1.79	2.19	2.53	2.83	3.10	3.58	4.38	5.06	5.66
			1.51	2.13	2.60	3.00	3.37	3.70	4.25	5.25	6.00	6.75
			1.51	2.13	2.60	3.00	3.37	3.70	4.25	5.25	6.00	6.75
			2.04	2.90	3.54	4.10	4.55	5.00	5.75	7.05	8.15	9.15
3	1/2		2.53	3.58	4.30	5.05	5.65	6.20	7.15	8.75	10.00	11.30
			3.38	4.80	5.85	6.78	7.55	8.30	9.60	11.80	13.50	15.10
			3.38	4.80	5.85	6.78	7.55	8.30	9.60	11.80	13.50	15.10
			4.30	6.05	7.40	8.55	9.60	10.50	12.10	14.80	17.10	22.90
4	3/4		5.10	7.25	8.85	10.20	11.40	12.50	14.50	17.70	20.40	22.90
			5.90	8.35	10.20	11.80	13.20	14.50	16.70	20.50	23.70	26.40
			6.75	9.50	11.70	13.50	15.10	16.50	19.10	23.40	27.00	30.20
			8.60	12.10	14.80	17.20	19.10	21.00	24.20	29.70	34.30	38.40
5	1		10.20	14.40	17.70	20.40	22.80	25.00	28.90	35.40	40.80	45.50
			12.60	17.90	21.90	25.30	28.30	31.00	35.80	43.80	50.60	56.50
			16.70	23.60	29.00	33.50	37.50	41.00	47.50	58.00	67.00	75.00
6	1 1/4		21.20	30.00	36.80	42.50	47.50	52.00	60.00	73.50	85.00	95.00
			25.30	35.80	43.80	50.50	56.50	62.00	71.50	87.50	102.00	113.00
7	1 1/2		28.80	42.00	51.50	59.50	66.50	73.00	84.20	107.00	123.00	138.00
			34.00	48.00	58.50	68.00	76.00	83.00	96.00	117.00	135.00	151.00
8	2		42.40	60.00	73.50	85.00	95.00	104.00	120.00	147.00	170.00	190.00
			51.00	72.00	88.50	102.00	114.00	125.00	144.00	177.00	204.00	228.00
		67.00	95.00	117.00	135.00	150.00	165.00	190.00	234.00	269.00	300.00	

流量数据是压差为3 bar时的标称容量(l/min), 基于16°C的水测得的,

该表数据仅适用于标准喷射角度情况。

Flow rate capacity related to water at 16 °C.

The nozzles are identified by the nominal capacity in l/min at a liquid pressure differential of 3 bar.

The table is only valid for standard spray angles.

产品目录
 Product Overview
 两液体喷嘴
 Two-Substance
 Nozzles
 防滴漏/专业包衣技术
 ABC/PCA Technique
 三/四液体喷嘴
 Three-/Four-
 Substance Nozzles
 多喷头技术
 Multispray
 喷嘴杆
 Insertion Pipes
 喷嘴头
 Nozzle Heads
 空心锥喷嘴
 Full-Cone Nozzles
 空心锥喷嘴
 Hollow-Cone Nozzles
 硬质合金喷嘴
 Carbide Nozzles
 扁平喷嘴
 Flat Spray Nozzles
 喷射喷嘴
 Smooth-Jet Nozzles
 混合喷嘴
 Mixing Nozzles
 拉瓦尔喷嘴
 Laval Nozzles
 清洗喷嘴
 Cleaning Nozzles
 喷嘴附件
 Accessories
 测试中心
 Test Center

SCHLICK 551-565系列 具体技术参数

Technical Details SCHLICK Series 551-565



553系列喷嘴雾化参数表(雾化角度为30°时)

Performance specification model 553 with 30° spray angle

Size	螺纹规格 Thread size G ISO 228	流量 (l/min) Flow rate in l/min at										
		0.5 bar	1 bar	1.5 bar	2 bar	2.5 bar	3 bar	4 bar	6 bar	8 bar	10 bar	
0	1/8											
			0.29	0.35	0.41	0.46	0.50	0.58	0.71	0.82	0.92	
			0.57	0.70	0.81	0.90	1.00	1.14	1.40	1.61	1.80	
			0.87	1.07	1.23	1.38	1.50	1.74	2.13	2.46	2.75	
			1.16	1.42	1.64	1.83	2.00	2.40	2.84	3.28	3.67	
1	1/4		1.44	1.76	2.04	2.28	2.50	2.88	3.53	4.07	4.55	
			0.57	0.70	0.80	0.90	1.00	1.15	1.40	1.63	1.83	
			0.65	0.80	0.94	1.05	1.15	1.33	1.63	1.88	2.10	
			0.92	1.13	1.30	1.45	1.60	1.85	2.26	2.26	2.80	
			0.82	1.16	1.41	1.63	1.83	2.00	2.31	2.83	3.27	3.65
2	3/8		0.98	1.38	1.70	1.96	2.19	2.40	2.77	3.39	3.92	4.38
			1.31	1.85	2.26	2.62	2.82	3.20	3.70	4.53	5.25	5.85
			1.63	2.30	2.82	3.26	3.55	4.00	4.60	5.65	6.53	7.30
			2.16	3.05	3.75	4.32	4.85	5.30	6.10	7.50	8.65	9.70
			2.16	3.05	3.75	4.32	4.85	5.30	6.10	7.50	8.65	9.70
3	1/2		2.70	3.82	4.65	5.40	6.05	6.60	7.60	9.35	10.8	12.0
			3.25	4.60	5.65	6.55	7.30	8.00	9.25	11.3	13.0	14.6
			3.80	5.36	6.55	7.60	8.50	9.30	10.7	13.1	15.2	17.0
			4.44	6.10	7.50	8.65	9.70	10.6	12.2	15.0	17.3	19.4
			5.53	7.55	9.30	10.7	11.9	13.1	15.1	18.5	21.4	24.0
4	3/4		6.55	9.25	11.3	13.1	14.6	16.0	18.5	22.6	26.2	28.2
			8.20	11.5	14.0	16.3	18.2	20.0	23.2	28.2	32.6	36.5
			10.8	15.3	18.7	21.6	24.2	26.5	30.6	37.5	43.3	48.4
5	1		13.7	19.3	23.7	27.4	30.6	33.5	38.8	47.5	55.0	61.2
			16.0	23.1	28.3	32.7	36.5	40.0	46.2	56.5	65.4	73.0
6	1 1/4		18.9	26.8	32.8	38.0	42.5	46.5	53.5	65.5	75.5	85.0
			21.6	30.5	37.5	43.2	48.5	53.0	61.0	75.0	86.5	97.0
7	1 1/2		27.0	38.2	46.6	54.0	60.3	66.0	76.0	93.0	108	120
			32.7	46.0	56.5	65.0	73.0	80.0	92.5	113	130	146
8	2		43.2	61.0	75.0	86.5	97.0	106	122	150	173	194

流量数据是压差为3 bar时的标称容量(l/min),
基于16°C的水测得的,

该表数据仅适用于标准喷射角度情况。

如需558系列喷嘴雾化参数表(雾化角度为10-20°时),请联系我们。

Flow rate capacity related to water at 16 °C.

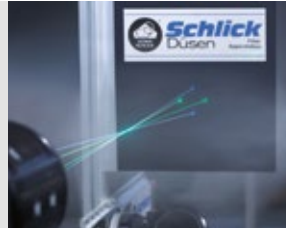
The nozzles are identified by the nominal capacity in l/min
at a liquid pressure differential of 3 bar.

The table is only valid for standard spray angles.

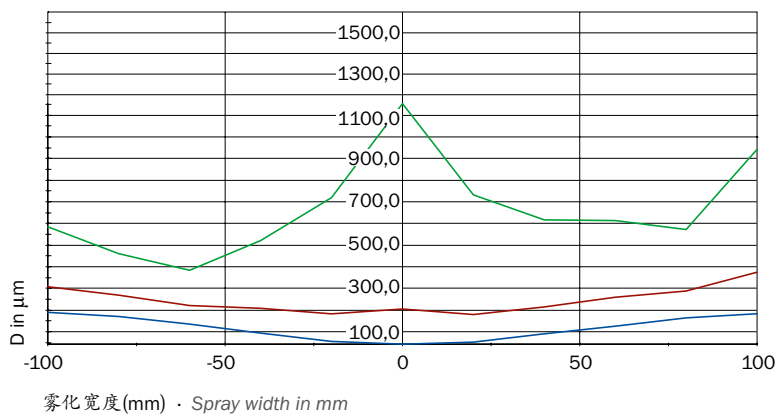
Model 558 with spray angles 10° - 20° on request.

相位多普勒测量技术 PDA measurement technology

Schlick测量系统采用双相位激光多普勒测试原理(5瓦氩离子激光器), 精准测量雾化液滴颗粒和其流动特性。

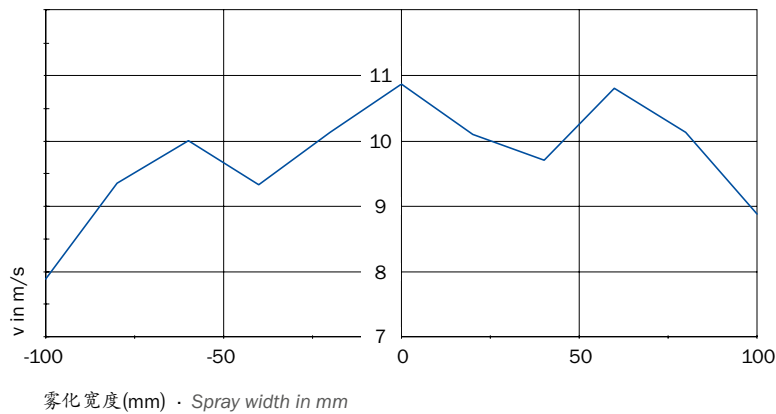


The SCHLICK measurement system, a drop measurement device designed according to the dual PDA principle (PDA = Phase-Doppler Anemometry), uses a 5-watt (argon-ionic) continuous wave laser.



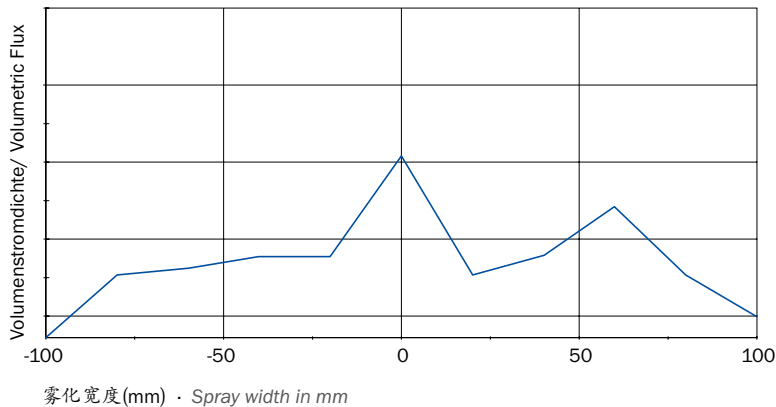
T雾化液滴大小(553/1系列喷嘴)
(这里以3 bar时的标称流量为3.0升/分钟的喷嘴为例)
雾化宽度: 200mm, 雾化高度: 100mm
液体流量: 7.6升/分钟, 液体压力: 5 bar (Δp)

Droplet size of Mod. 553/1
(nominal throughput 3.0 l/min at 3 bar)
Spray width: 200 mm, distance: 100 mm,
liquid throughput: 7,6 l/min, liquid pressure: 5 bar (Δp)



雾化速度(553/1系列喷嘴)
(这里以3 bar时的标称流量为3.0升/分钟的喷嘴为例)
雾化宽度: 200mm, 雾化高度: 100mm
液体流量: 7.6升/分钟, 液体压力: 5 bar (Δp)

Velocities of Model 553/1
(nominal throughput 3.0 l/min at 3 bar)
Spray width: 200 mm, distance: 100 mm,
liquid throughput: 7,6 l/min, liquid pressure: 5 bar (Δp)



体积密度(553/1系列喷嘴)1
(这里以3 bar时的标称流量为3.0升/分钟的喷嘴为例)
雾化宽度: 200mm, 雾化高度: 100mm
液体流量: 7.6升/分钟, 液体压力: 5 bar (Δp)

Volume density of Mod. 553/1
(nominal throughput 3.0 l/min at 3 bar)
Spray width: 200 mm, distance: 100 mm,
liquid throughput: 7,6 l/min, liquid pressure: 5 bar (Δp)

客户定制的全锥型喷嘴 *SCHLICK Customized Designs Full-Cone Nozzles*

Mod. 551-565

压力式喷嘴/实心锥喷嘴

Pressure Nozzles / Full-Cone

可按客户要求定制， 小批量生产

作为一家全球领先的喷嘴制造商，SCHLICK一直为客户提供高质量的标准解决方案。

当然，凭借高精度的制造能力以及丰富的研发经验，SCHLICK也可根据客户要求设计开发、定制喷嘴。

即使客户需求数量很少、交期短。

Custom and individual designs, small series

As a leading nozzle manufacturer, high quality standardised solutions are business-as-usual for SCHLICK.

However, thanks to the breadth of its manufacturing capacities and comprehensive expertise, SCHLICK can also produce custom and individual designs for specific applications.

No matter how small the series or short the timeframe.

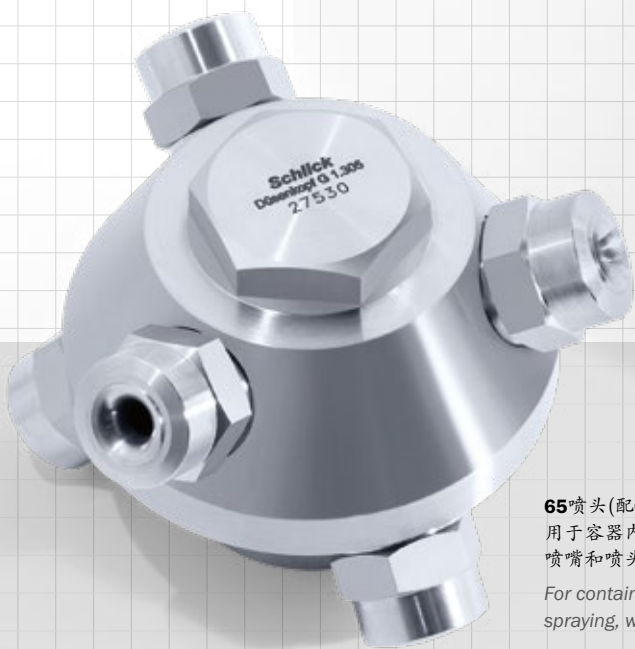


65 喷头(配11个556/2实心锥喷嘴)
中心供液, 360°雾化,
喷嘴和喷头内部螺纹连接。

Centric intake, sprays in all directions
(360° coverage), internal screw thread
attachment.

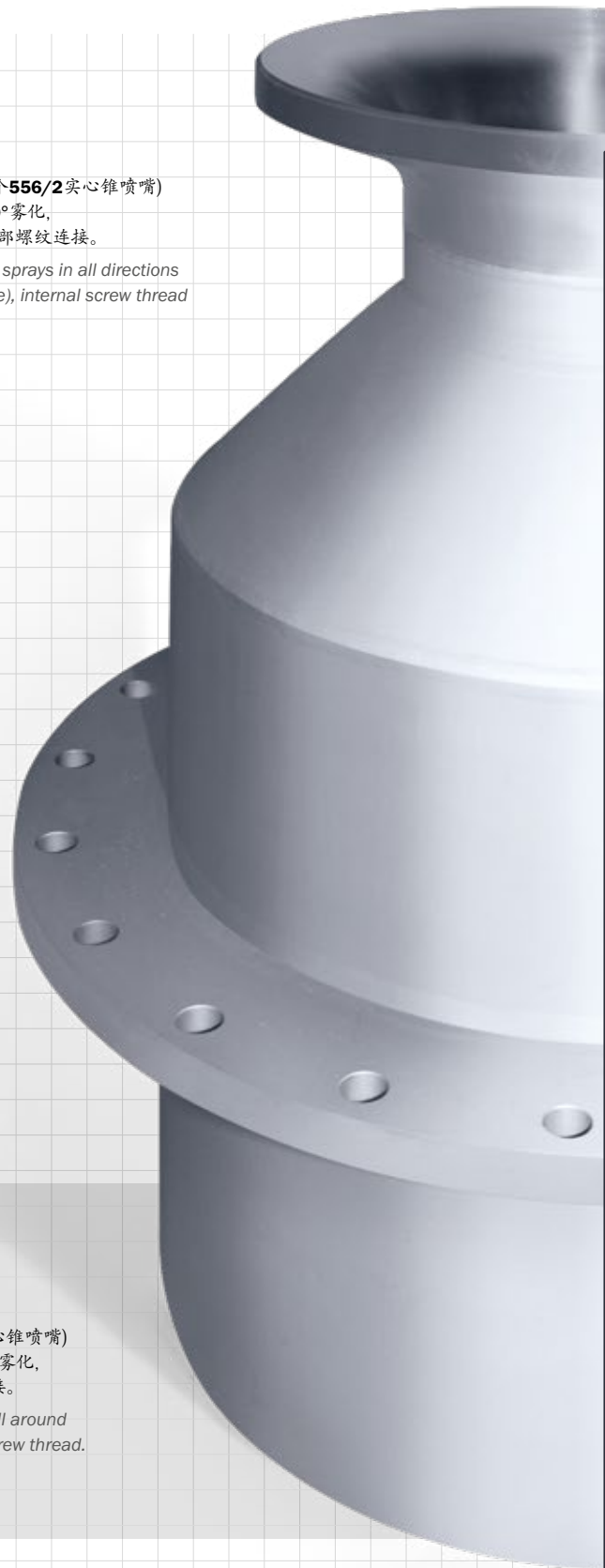
553/556 Size 19 喷嘴
形状根据客户特殊要求定制。

Model 553/556 size 19
Custom design with special attachment
geometry according to customer specifications.
Air flow rate max. 60.000 l/min.



65 喷头(配6个556/3实心锥喷嘴)
用于容器内清洁, 全方位雾化,
喷嘴和喷头内部螺纹连接。

For container cleaning, all around
spraying, with internal screw thread.



产品目录
Product Overview

两液体喷嘴
Two-Substance
Nozzles

防飞溅/专业泡沫技术
ABC/PCA Technique

三/四液体喷嘴
Three-/Four-
Substance Nozzles

多喷头技术
Multispray

喷射杆
Insertion Pipes

喷嘴头
Nozzle Heads

空心锥喷嘴
Full Cone Nozzles

空心锥喷嘴
Hollow-Cone Nozzles

硬质合金喷嘴
Carbide Nozzles

扁平喷嘴
Flat Spray Nozzles

喷射喷嘴
Smooth-Jet Nozzles

混合喷嘴
Mixing Nozzles

拉瓦尔喷嘴
Laval Nozzles

清洗喷嘴
Cleaning Nozzles

喷嘴附件
Accessories

测试中心
Test Center