

## 60-65系列和77系列喷头 SCHLICK Series 60-65 and Model 77

● 喷头经优化后，  
可装配各种喷嘴

*Optimised nozzle heads can be  
combined with many different  
nozzle models*

● 流量大，雾化面积大，  
雾化均匀，液滴细小

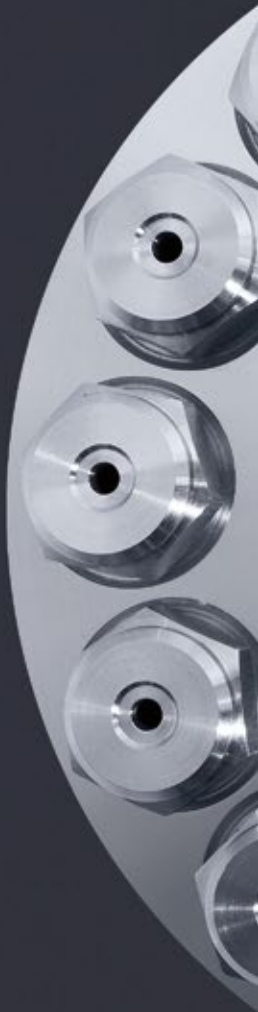
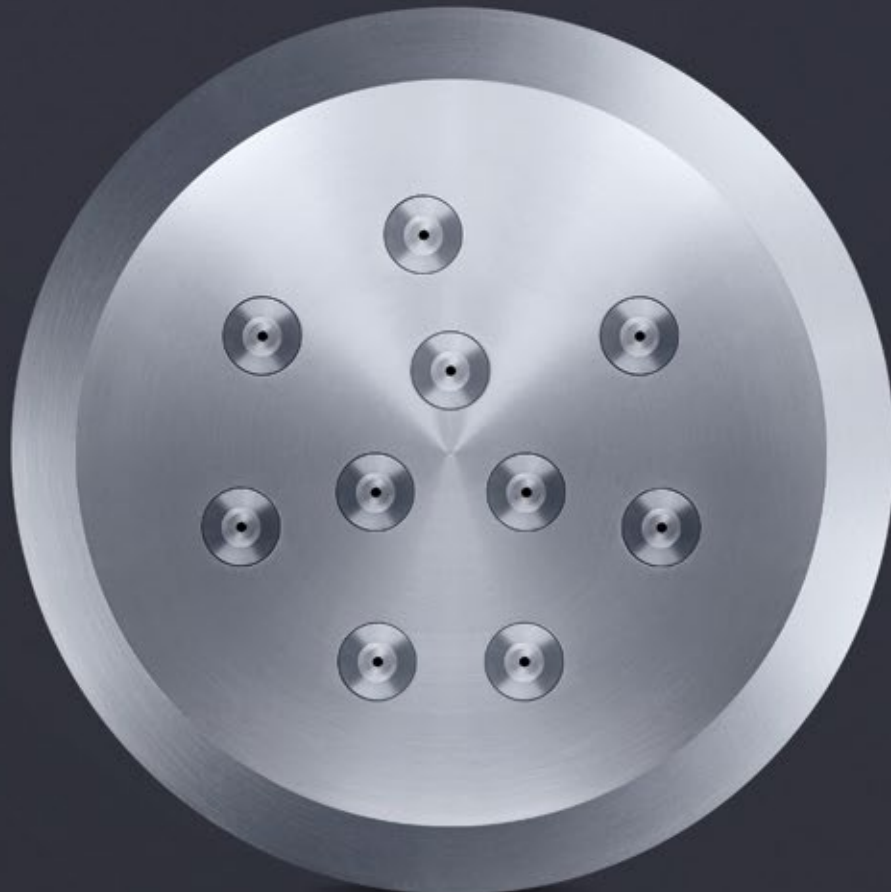
*High air flow rates for maximum  
surface coverage with the finest  
possible droplets*

● SCHLICK喷头应用极为广泛，  
雾化一致性好

*The SCHLICK nozzle heads allow the very  
diverse application options and ensure  
reproducible results*

● 超过1000种不同的喷头，  
能满足各种不同需求和应用场合

*Well over 1000 different variations suit  
almost every task – further developments  
guaranteed*



# 100%德国制造 SCHLICK喷头



## 材质

- 耐酸不锈钢
- 耐高温不锈钢
- 黄铜
- 钽
- 钛
- 哈氏合金
- 铬镍合金
- 聚四氟乙烯
- 聚丙烯
- 聚氯乙烯
- 聚偏氟乙烯
- 超高分子量聚乙烯
- 其他客户指定材料

## Materials

- Acid resistant stainless steel
- Heat resistant stainless steel
- Brass
- Tantalum
- Titanium
- Hastelloy
- Inconel
- PTFE
- PP
- PVC
- PVDF
- RCH 1000
- Custom materials available on request

产品目录  
Product Overview

两液体喷嘴  
Two-Substance  
Nozzles

防滴漏/专业包浆技术  
ABC/PCA Technique

三/四液体喷嘴  
Three-/Four-  
Substance Nozzles

多喷头技术  
Multispray

喷嘴杆  
Insertion Pipes

喷嘴头  
Nozzle Heads

实心喷嘴  
Full Cone Nozzles

空心喷嘴  
Hollow Cone Nozzles

硬质合金喷嘴  
Carbide Nozzles

扁平喷嘴  
Flat Spray Nozzles

喷射喷嘴  
Smooth-Jet Nozzles

混合喷嘴  
Mixing Nozzles

拉瓦尔喷嘴  
Laval Nozzles

清洗喷嘴  
Cleaning Nozzles

喷嘴附件  
Accessories

测试中心  
Test Center

# SCHLICK 60-65系列喷头 SCHLICK Series 60-65



## 可变喷头— 互换性强

SCHLICK喷头通常用于大面积雾化的场合，流量分配到多个喷嘴，实现了雾化流量大、雾化面积大，同时雾化均匀、雾化液滴细小

喷头可与各种类型喷嘴(实心锥喷嘴、空心锥喷嘴)组合使用,且易于互换

通过不同的组合形式,能实现各种不同流量和各种不同雾化特性

## Variable nozzle heads – easily interchangeable

SCHLICK nozzle heads are often used to evenly cover very large surfaces with liquid. Because the liquid quantity is divided between the nozzles through small holes, very fine droplets can be achieved with the maximum air flow.

The nozzle heads can be combined with various types of nozzle (full cone, hollow cone) and are easily interchangeable.

Through the diverse mounting options very different sprays can be achieved with variable liquid flow rates.



SCHLICK喷头有多种形状可供选择,和实心锥或空心锥喷嘴相组合,能实现各种不同流量和雾化特性

SCHLICK nozzle heads are available in several models. Combined with the relevant full cone or hollow cone nozzle it is possible to achieve very diverse spray characteristics.

根据所需的雾化结果,可选择实心锥或空心锥喷嘴组合,喷嘴甚至手工就能更换。

Depending on the spray result desired the nozzle heads are fitted with SCHLICK full cone or hollow cone nozzles. If required these can be easily replaced by hand.



如有技术变更,恕不另行通知。

创新性设计确保了完美雾化效果

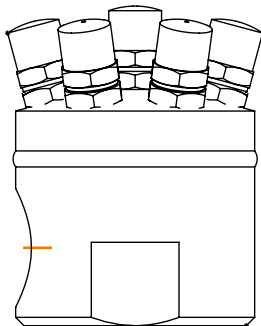
- 安装拆卸非常简单
- 显著减少维修时间
- 多种安装方式可选
- 终身售后服务保障
- 免费产品设计和技术支持

**Innovative product design for perfect spraying:**

- Extremely easy to adjust for maximum flexibility
- Significant reduction in maintenance downtimes thanks to easy access to all components
- Wide range of installation options thanks to modular construction
- Long-term after-sales warranty
- Engineering free of charge

喷头可选择通过螺纹或者焊接，中心安装或者直角安装，即使基本型号也能满足雾化要求

Nozzle heads are available with central or right-angled attachments (L series) and even the basic model fulfils the majority of requirements.



60 L 喷头, 直角安装

SCHLICK model 60 L with a right-angled attachment



60/0 系列喷头, 可安装 4 个 G1/4 接口的喷嘴

SCHLICK model 60/0 for 4 nozzles G 1/4



SCHLICK 60/5 型, 用于 21 个喷嘴 G 1/4

SCHLICK model 60/5 for 21 nozzles G 1/4

产品目录  
Product Overview

两液体喷嘴  
Two-Substance  
Nozzles

防滴漏 / 专业包装技术  
ABC/PCA Technique

三/四液体喷嘴  
Three-/Four-  
Substance Nozzles

多喷头技术  
Multispray

喷射杆  
Insertion Pipes

喷嘴头  
Nozzle Heads

实心锥喷嘴  
Full-Cone Nozzles

空心锥喷嘴  
Hollow-Cone Nozzles

硬质合金喷嘴  
Carbide Nozzles

扁平喷嘴  
Flat-Spray Nozzles

喷射喷嘴  
Smooth-Jet Nozzles

混合喷嘴  
Mixing Nozzles

拉瓦尔喷嘴  
Laval Nozzles

清洗喷嘴  
Cleaning Nozzles

喷嘴附件  
Accessories

测试中心  
Test Center

# 60-65系列喷头 SCHLICK Series 60-65



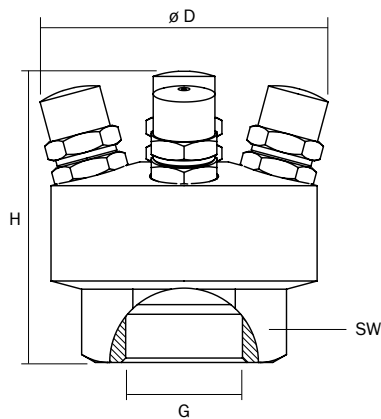
## 60型喷头尺寸

### Dimensions of model 60

喷头型号 Size of nozzle head		0	1	2	3	4	5	6	7	8
螺纹 Screw fitting	G G	3/4	1	1	1 1/4	1 1/2	2	2 1/2	3	3
扳手尺寸 Spanner size	SW SW	36	41	46	60	70	80	95	120	120
最大直径 Max. diameter	大约 D approx.	60	72	92	102	112	144	160	180	190
最大高度 Max. height	大约 H approx.	60	70	90	95	100	115	125	140	150

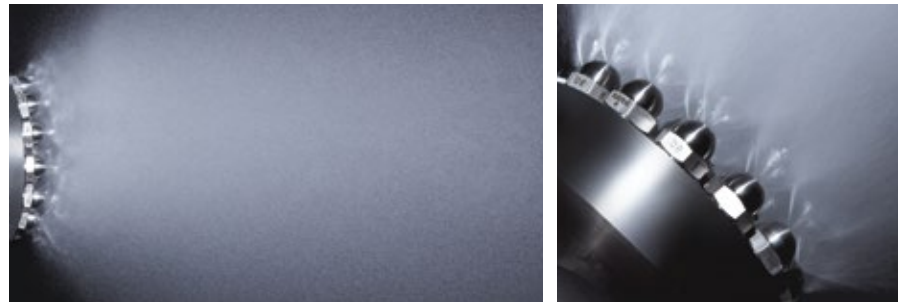
匹配喷嘴型号 Configuration with SCHLICK model		可安装几个实心锥喷嘴 Number of fitted full-cone nozzles								
553/0, 556/0	G 1/8	6	7	9	14	20	28	37		
553/1, 556/1	G 1/4	4	5	8	10	14	21	27	39	48
553/2, 556/2	G 3/8		4	7	8	10	16	19	27	35
553/3, 556/3	G 1/2			3	4	7	9	12	17	19
553/4, 556/4	G 3/4						7	9	12	14
553/5, 556/5	G 1									9

匹配喷嘴型号 Configuration with SCHLICK model		可安装几个空心锥喷嘴 Number of fitted hollow-cone nozzles								
100/1, 200/1	G 1/8	4	5	8	10	14	21	27	39	48
100/2, 200/2	G 1/4		4	7	8	10	16	19	27	35
100/3, 200/3	G 3/8			4	6	8	12	14	19	24
100/4, 200/4	G 1/2			3	4	7	9	12	17	19
100/5, 200/5	G 3/4						5	7	9	12
121 V	G 1/4	4	5	8	10	14	21	27	39	48



## 60型喷头匹配121系列喷嘴图片

### Spray model 60 fitted with model 121



如有技术变更, 恕不另行通知。

## SCHLICK – 专为雾化解决方案而生

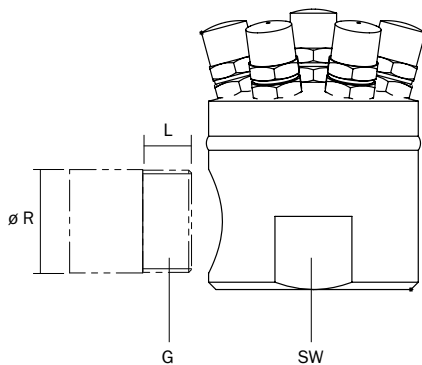
打造每一个完美的细节  
**Perfection to the last detail**

从设备设计规划到实际批量生产,  
Schlick都能提供完美解决方案

SCHLICK know-how – from planning  
to installation. We would be delighted  
to assist in the optimisation of your  
technical and operational results.

### 60L系列喷头尺寸 Dimensions of model 60 L

喷头型号 Size of nozzle head		1/4	3/8	1/2	0	1	2	3	4	5	6	7	8
螺纹 Screw fitting	G G	1/4	3/8	1/2	3/4	1	1	1 1/4	1 1/2	2	2 1/2	3	3
管径 Pipe diameter	R R	14	17.2	21.3	26.9	33.7	33.7	42.4	48.3	60.3	76.1	88.9	88.9
长度 Length	L L	9	11	14	16	19	19	20	21	24	27	30	30
扳手尺寸(如需要) Spanner size (if required)	SW SW	41	41	41	41	55	65	70	90	110			
安装直径 Installation diameter		未标注尺寸,如有需要,请联系我们 Please ask for missing dimensions											
匹配喷嘴型号 Configuration with SCHLICK model		可安装几个实心锥喷嘴 Number of fitted full-cone nozzles											
553/0, 556/0	G 1/8	6	6	6	6	7	9	14	20	28	37		
553/1, 556/1	G 1/4	4	4	4	4	5	8	10	14	21	27	39	48
553/2, 556/2	G 3/8					4	7	8	10	16	19	27	35
553/3, 556/3	G 1/2						3	4	7	9	12	17	19
553/4, 556/4	G 3/4									7	9	12	14
553/5, 556/5	G 1												9
匹配喷嘴型号 Configuration with SCHLICK model		可安装几个空心锥喷嘴 Number of fitted hollow-cone nozzles											
100/1, 200/1	G 1/8	4	4	4	4	5	8	10	14	21	27	39	48
100/2, 200/2	G 1/4					4	7	8	10	16	19	27	35
100/3, 200/3	G 3/8						4	6	8	12	14	19	24
100/4, 200/4	G 1/2						3	4	7	9	12	17	19
100/5, 200/5	G 3/4									5	7	9	12
121 V	G 1/4	4	4	4	4	5	8	10	14	21	27	39	48



## SCHLICK 77系列喷头 SCHLICK Model 77



### 固定式喷头-牢固

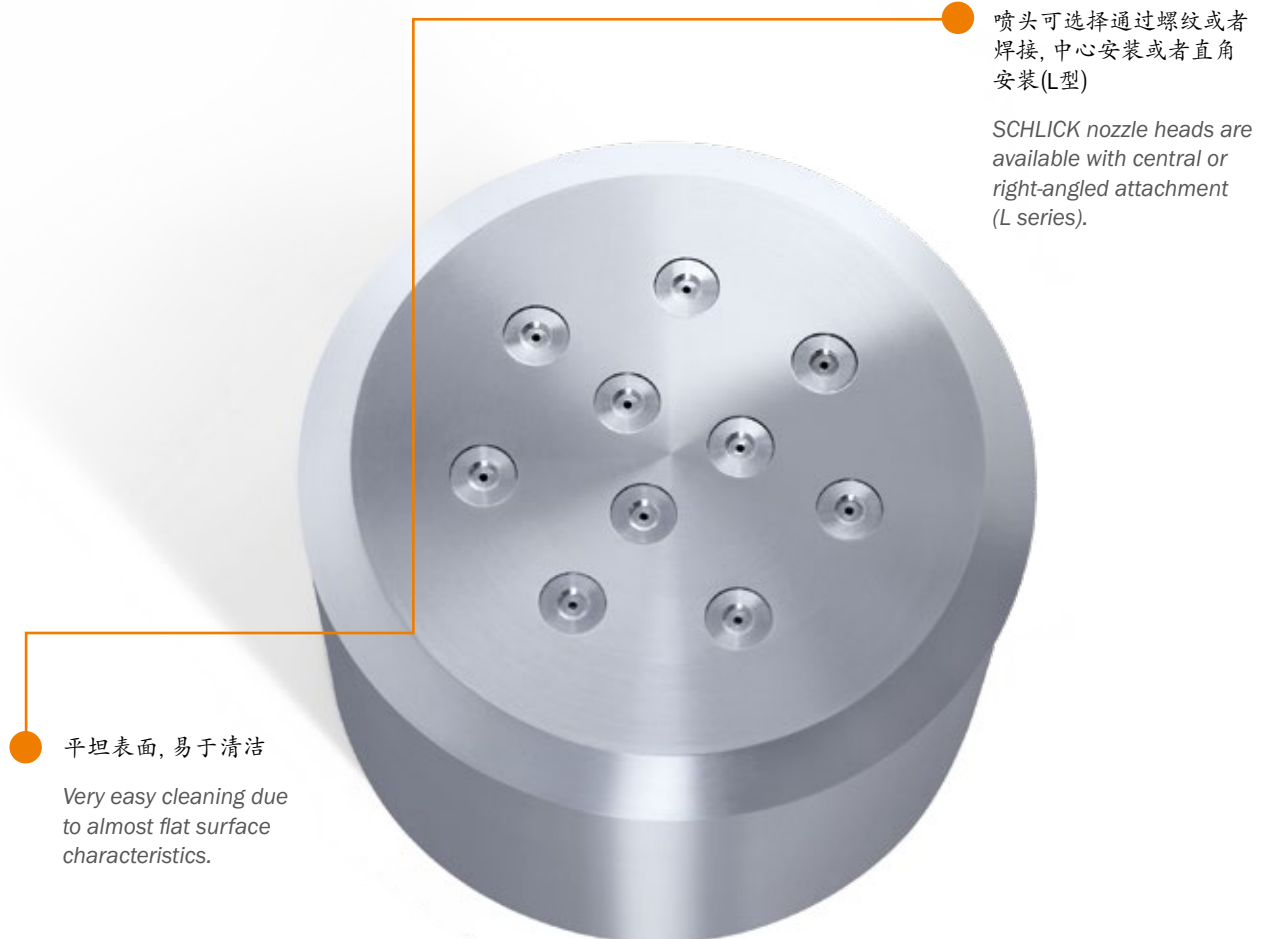
77系列喷头主要也是用于大面积雾化的场合，流量分配到多个喷嘴，实现了雾化流量大、雾化面积大，同时雾化均匀、雾化液滴细小

通过不同的组合形式，能实现各种不同流量和各种不同雾化特性

### Fixed nozzle heads – the reliable option

The SCHLICK nozzle head model 77 is also primarily used to evenly cover very large surfaces with liquid. The liquid is divided between various nozzles with small bore holes. This also allows very fine droplets to be achieved at maximum air flow rates.

Through the diverse mounting options very different sprays can be achieved with variable liquid flow rates.



平坦表面，易于清洁

Very easy cleaning due to almost flat surface characteristics.

喷头可选择通过螺纹或者焊接，中心安装或者直角安装(L型)

SCHLICK nozzle heads are available with central or right-angled attachment (L series).

如有技术变更，恕不另行通知。

创新性设计确保了完美雾化效果

- 维护简单, 显著减少维护时间
- 应用范围非常广泛
- 终身售后服务保障
- 免费产品设计和技术支持

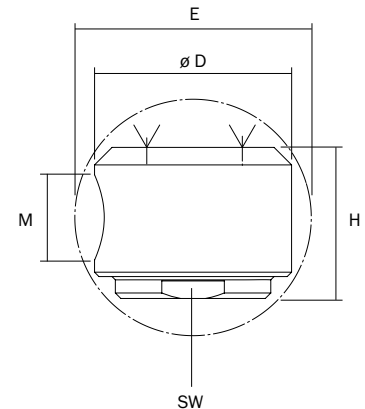
**Innovative product design for perfect spraying:**

- Significant reduction in servicing downtimes due to very easy cleaning
- Very wide range of applications
- Long-term after-sales warranty
- Engineering free of charge

77系列喷头尺寸

Dimensions of model 77

喷头大小 Nozzle head		4喷嘴 4 nozzles	8喷嘴 8 nozzles	0/12喷嘴 10/12 nozzles	20喷嘴 20 nozzles
螺纹 Screw fitting	M M	30 x 1.5	42 x 1.5	42 x 1.5	42 x 1.5
扳手尺寸 Spanner size	SW SW	46	60	65	80
直径 Diameter	D D	60	80	90	100
高度 Height	H H	60	71	72	80
套筒尺寸 Lead-in muff diameter	E E	DN 80	DN 100	DN 100	DN 125
图纸编号 Drawing number		G1.259a	G1.255a	G1.256a	G1.257a



77系列喷头  
SCHLICK model 77



# 60-65系列和77系列喷头 *SCHLICK Series 60-65 and Model 77*



喷头/压力设备指令97/23/EC  
Nozzle Heads / Pressure Equipment Directive 97/23/EC

## 应用

- 空气调节
- 冷凝
- 直接润滑
- 防火
- 气体冷却
- 加湿
- 混合
- 工艺工程
- 过热蒸汽冷却
- 烟草保湿
- 洗涤

## Applications

- Air conditioning
- Condensing
- Direct lubrication
- Fire protection
- Gas cooling
- Humidifying
- Mixing
- Process engineering
- Superheated steam cooling
- Tobacco moisturising
- Washing



产品目录  
Product Overview

两液体喷嘴  
Two-Substance  
Nozzles

防滴漏/专业包浆技术  
ABC/PCA Technique

三/四液体喷嘴  
Three-/Four-  
Substance Nozzles

多头技术  
Multispray

喷射杆  
Insertion Pipes

喷嘴头  
Nozzle Heads

空心锥喷嘴  
Full Cone Nozzles

空心锥喷嘴  
Hollow Cone Nozzles

硬质合金喷嘴  
Carbide Nozzles

扁平喷嘴  
Flat Spray Nozzles

喷射喷嘴  
Smooth-Jet Nozzles

混合喷嘴  
Mixing Nozzles

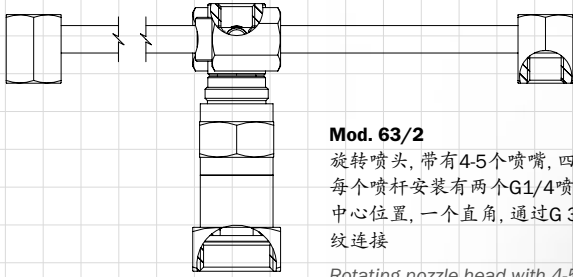
拉瓦尔喷嘴  
Laval Nozzles

清洗喷嘴  
Cleaning Nozzles

喷嘴附件  
Accessories

测试中心  
Test Center

# 定制款60-65和77系列喷头 SCHLICK Customized Designs 60-65, 77



### Mod. 63/2

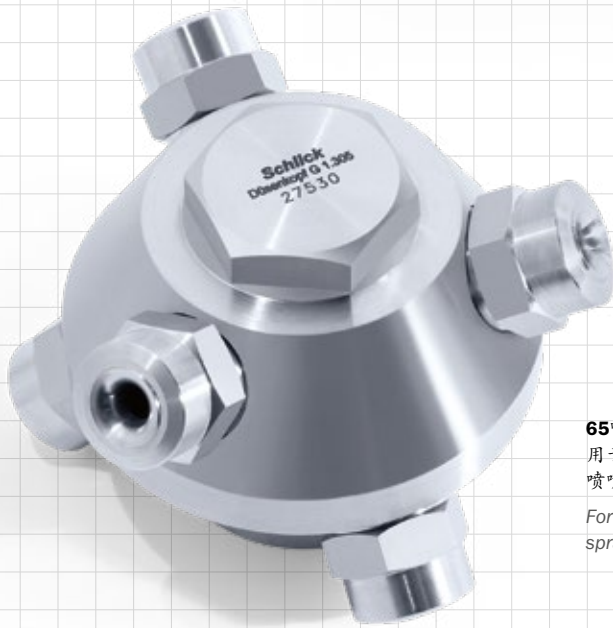
旋转喷头, 带有4-5个喷嘴, 四个喷杆, 每个喷杆安装有两个G1/4喷嘴, 一个中心位置, 一个直角, 通过G 3/4内螺纹连接

Rotating nozzle head with 4-5 nozzles, four arms, mounted in two positions and one G 1/4 and G 1/4 centrally on each side, attachment G 3/4 as an internal screw thread.



### 65"喷头(配11个556/2"喷嘴)

中心供液, 360°雾化, 喷嘴和喷头内部螺纹连接  
Centric intake, sprays in all directions (360° coverage), internal screw thread attachment.



### 65"喷头(配6个556/3"喷嘴)

用于罐内清洗, 全方位喷雾, 喷嘴和喷头内部螺纹连接

For container cleaning, all around spraying, with internal screw thread.

可按客户要求定制,  
小批量生产

作为一家全球领先的喷嘴制造商, SCHLICK一直为客户提供高质量的标准化解决方案。

当然, 凭借高精度的制造能力以及丰富的研发经验, SCHLICK也可根据客户要求设计开发、定制喷嘴。

即使客户需求数量很少、交期短。

Custom and individual designs,  
small series

As a leading nozzle manufacturer, high quality standardised solutions are business-as-usual for SCHLICK.

However, thanks to the breadth of its manufacturing capacities and comprehensive expertise, SCHLICK can also produce custom and individual designs for specific applications.

No matter how small the series or short the timeframe.

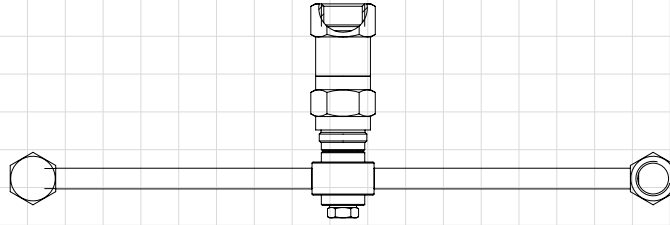
如有技术变更, 恕不另行通知。



**77**喷头(配10个120喷嘴)

喷头90°设计, 配合几乎同一平面的喷嘴, 雾化面积大, 喷雾量均匀

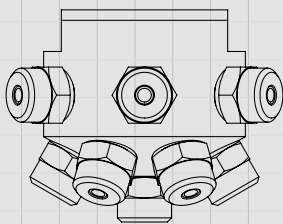
Angled design with integrated and almost flat mounted nozzles. Large scatter cone with even flow rate density.



**Mod. 63/2**

旋转式喷头, 两个喷杆, 可各安装一个G 3/8螺纹喷嘴, 喷杆和喷头通过G 1/2螺纹连接

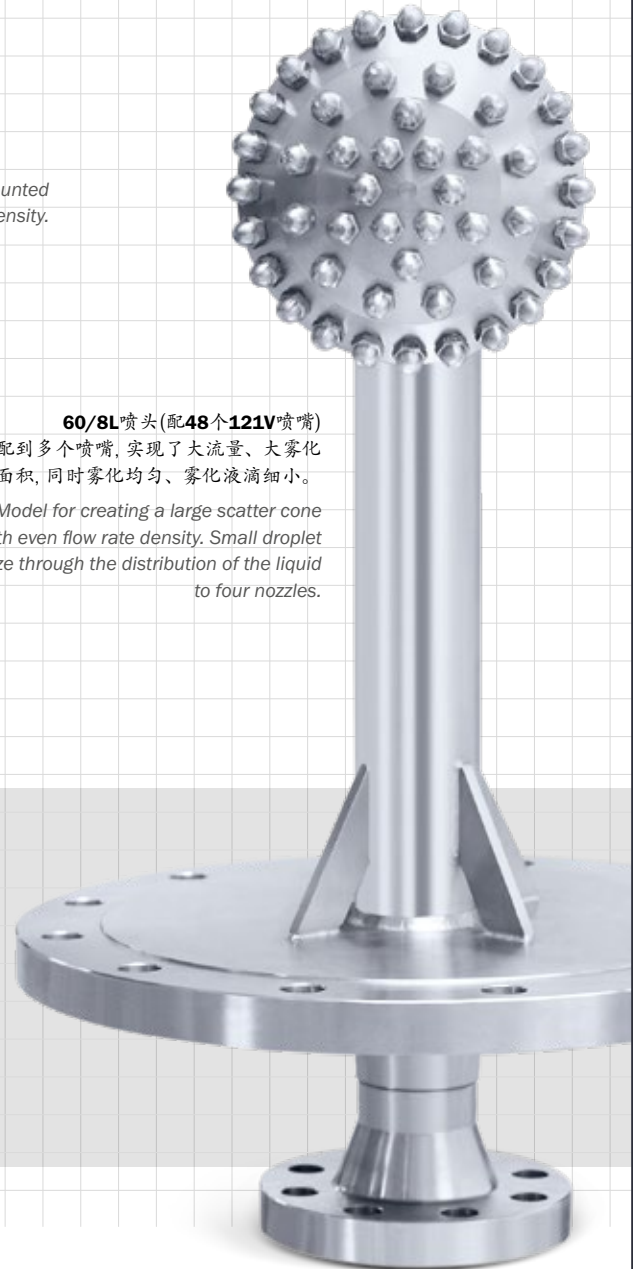
Rotating nozzle head, two arms, mounted in two positions and one G 3/8 internal screw thread on each side, attachment G 1/2 internal screw thread.



**65**喷头(配13个553/3喷嘴)

水平面及以下雾化

Sprays to the side and underneath.



**60/8L**喷头(配48个121V喷嘴)

流量分配到多个喷嘴, 实现了大流量、大雾化面积, 同时雾化均匀、雾化液滴细小。

Model for creating a large scatter cone with even flow rate density. Small droplet size through the distribution of the liquid to four nozzles.

产品目录  
Product Overview

两液体喷嘴  
Two-Substance  
Nozzles

防飞溅/专业包衣技术  
ABC/PCA Technique

三/四液体喷嘴  
Three-/Four-  
Substance Nozzles

多头技术  
Multispray

喷嘴杆  
Insertion Pipes

喷嘴头  
Nozzle Heads

实心锥喷嘴  
Full-Cone Nozzles

空心锥喷嘴  
Hollow-Cone Nozzles

硬质合金喷嘴  
Carbide Nozzles

扁平喷嘴  
Flat Spray Nozzles

喷射喷嘴  
Smooth-Jet Nozzles

混合喷嘴  
Mixing Nozzles

拉瓦尔喷嘴  
Laval Nozzles

清洗喷嘴  
Cleaning Nozzles

喷嘴附件  
Accessories

测试中心  
Test Center