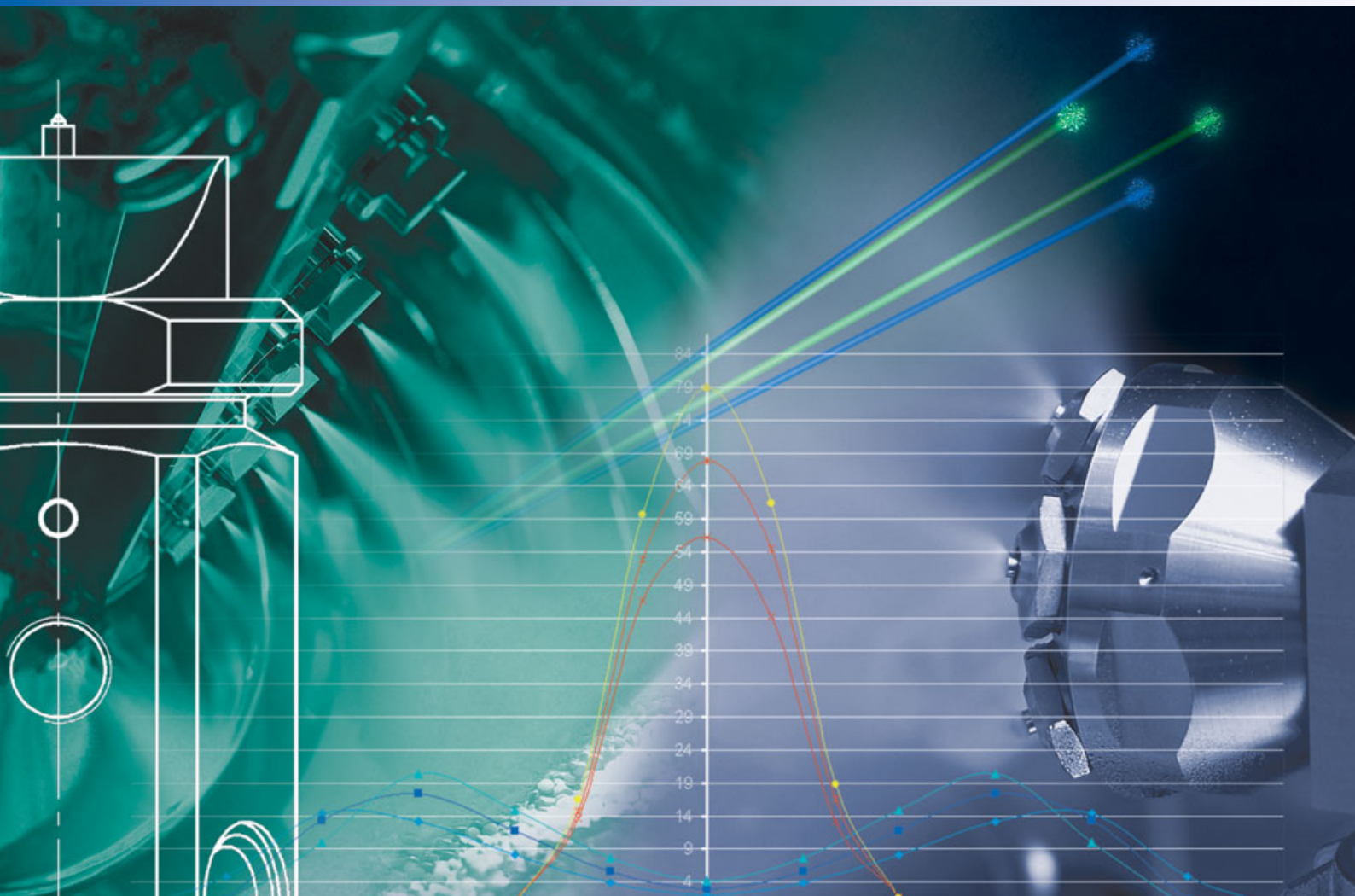


The Schlick Test Centre (STC)

A service centre for all your
measuring and testing needs



STC – Expertise for everything

Measuring and testing guarantees the highest quality.

Düsen-Schlick GmbH has been one of the leading nozzle manufacturers in the world from the very beginning. More than 100 years of development ensure quality and individual problem solving. This is an ideal basis as after all, the nozzle is described as the “heart” of the system in spray technology. We guarantee these necessary, high quality standards using a comprehensive quality management system, to which the “Schlick Test Centre” (STC) makes an essential contribution.

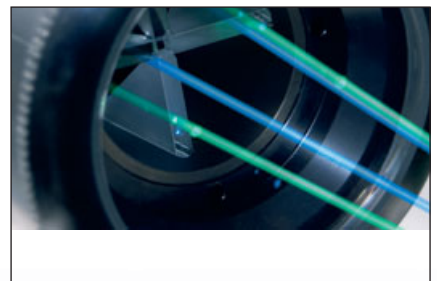
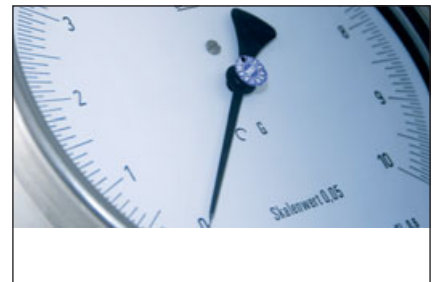
Our engineers and technicians use the STC for stress and endurance tests on newly developed types of nozzles, and also for continuous quality testing of the whole nozzle range. For years we have also been carrying out special measurements, tests and improvements on behalf our customers. As a result of increased demand we have now included these testing and measurement services in our official range of services.

Our wealth of experience = your advantage

Through collaboration during the development of new drop measurement systems, Düsen-Schlick GmbH has made a considerable contribution to the high level of measurement accuracy that is possible today. However, as the size of the drop is only part of the assessment of a nozzle, it is crucial that other relevant criteria are also included in the evaluation.

We measure, analyse and document the following for you:

- Drop size
- Drop speed
- Flow rate density
- Spray distribution
- Rheological behaviour of liquids
- Sound level
- Cleaning trials
- Comparative drop measurement
- Comparative performance measurement
- Troughput measurement



The Schlick Test Centre (STC)

to do with measurement

The Schlick Test Centre (STC)

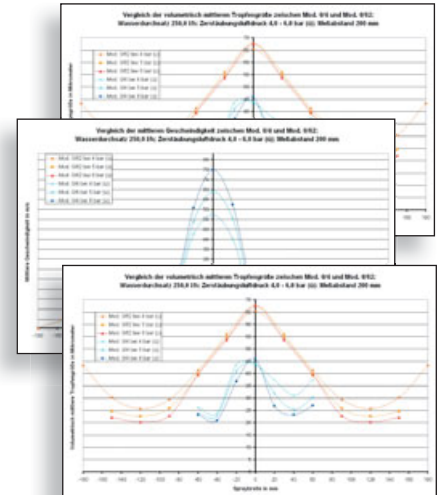
The STC brings together all state-of-the-art measuring and testing equipment in an area exceeding 400 m². The following facilities are available for the evaluation of the sprays from one-, two- and multiple-substance nozzles and for the evaluation of customer's materials:

- Dynamic drop measurement system (DUAL-PDA)
- Extraction to the drop measurement system for the measurement of customer's materials
- Spray distribution testing equipment
- High-pressure pumps
- Viscosity testing equipment
- Sound level meter
- Heatable pressure tank

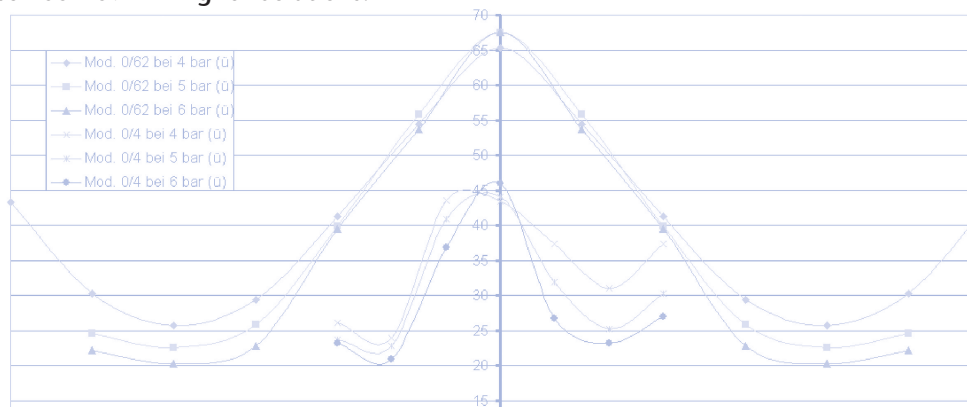
Furthermore, access to a network of neutral advisors from the fields of training and research provides the STC user with the assurance that, in addition to causal research and damage analysis, it will be possible to gain support in cross-process solution development. All this applies right from the conception of a new idea through to the production of a prototype and the necessary test runs.

Our service package

We offer our customers differentiated services, which range from simple measurements with the appropriate records to detailed testing reports with discussion of the results and suggestions for improvements to your processes. Our work does not just allow for the use of current technology. On the basis of the measurement results achieved, we can produce prototype solutions at the same time. We can use our database of over 40 000 tested solutions to do this. Of course our specialists will also conduct trials at your place of work – directly in your system.



Düsen-Schlick – Living for Solutions!



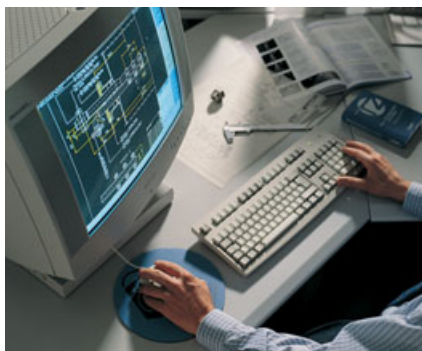
Service spectrum

Test nozzles

Schlick spray nozzles are world renowned for highest precision. We can offer you the best and most lasting solution to your requirements. And, if you want, we can supply you with test nozzles in advance – just contact us.

Engineering

Take advantage of our comprehensive expertise – from design to installation – the conception of new products or the optimisation of existing plant. We would be glad to help you improve the success of your operation.



Repair service

As well as competent advice and its inception, you can profit from an efficient after-sales service that guarantees long-term supply of all products. We carry out both repair and conversion of Schlick spray nozzles, and in emergency, we can supply spare parts quickly and reliably.

Onsite service

If required we will investigate and develop an optimal solution to suit individual requirements onsite. We will advise you and give you support during installation and initial start-up of the plant. A further plus is the help available from our world-wide technical field service network.

Custom products

As one of the leading spray nozzle manufacturers in Europe, we can offer both high quality standard solutions and are in the position of developing customised products for individual tasks as fast as possible, even for small production runs.

Documentation to the customer's requirements

Reliability and quality are the basis for successful cooperation with our international customers. This applies both to our products and to our service. If you wish, we will supply you with all necessary documentation such as technical handbooks for the nozzles (drawings, flow diagrams, installation and operating instructions) together with factory and material specifications.

Certified by



DIN EN ISO 9001:2000
Zertifikat: 01 100 041248

to DIN EN ISO 9001:
2000

Düsen-Schlick GmbH
Hutstraße 4
D-96253 Untersiemau
Germany

Phone +49 (0) 95 65/94 81-0
Fax +49 (0) 95 65/28 70
email info@duesen-schlick.de

www.duesen-schlick.de
www.duesen-schlick.com