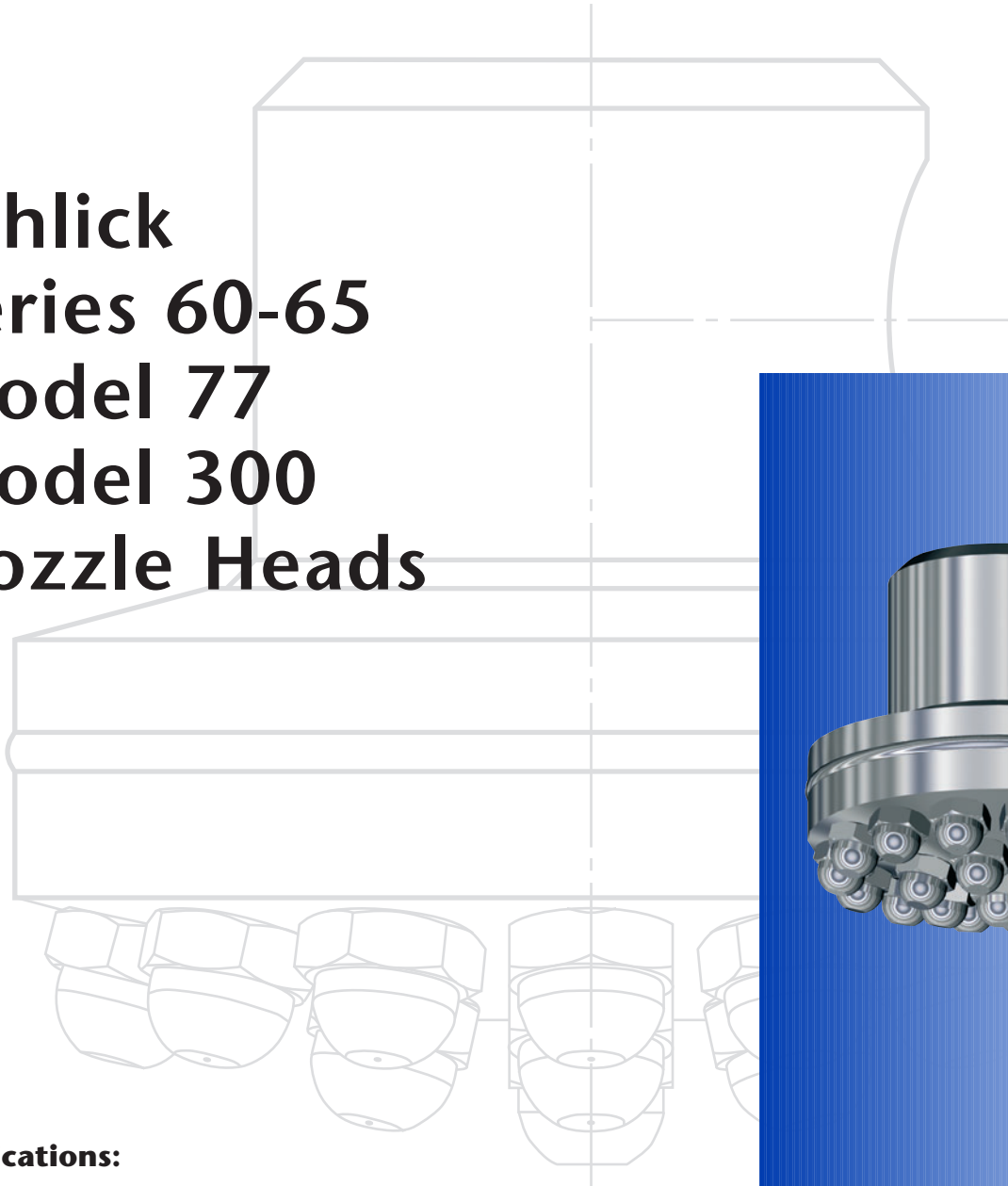


# Schlick Series 60-65 Model 77 Model 300 Nozzle Heads

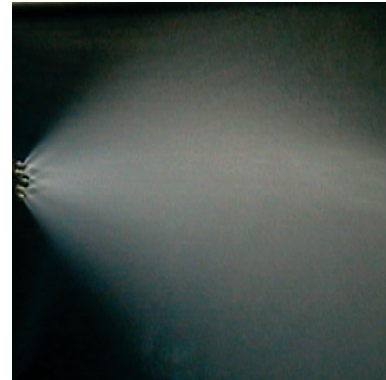


## Applications:

- Air conditioning
- Condensing
- Direct lubrication
- Fire protection
- Gas cooling
- Humidifying
- Mixing
- Process engineering
- Superheated steam cooling
- Tobacco moisturising
- Washing

## Schlick nozzle heads

- Nozzle heads are available in differing designs either as fixed or rotating systems.
- Nozzle heads are mostly used where large surfaces are to be uniformly sprayed with a liquid.
- If high flow rates needing fine droplets are required nozzle heads are the right choice because the liquid is distributed in large volumes through several nozzles with small orifices. A common area of application for such systems is the cooling of gas or superheated steam.
- Our versatile nozzle heads can be fitted with nozzles having different spray angles (full cone, hollow cone) and replacing the nozzles or changing them for a different spray angle is an easy task.
- Rotating nozzle heads are particularly suited to the cleaning of containers, tanks, etc.



## Nozzle designs

### **Model 60 – Nozzle head**

With central fitting

Shown here with Model 121 Kreisl spray nozzles

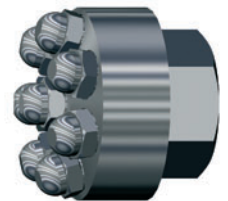


Fig. 12001

### **Model 60 L – Nozzle head**

With right-angled fitting

Shown here with Model 200 hollow-cone nozzles



Fig. 12002

### **Model 65 – Nozzle head**

Shown here with Model 553 full-cone nozzles

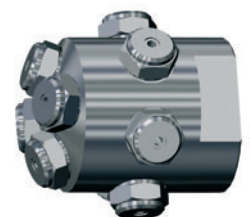


Fig. 12003

## Assemblies

### Nozzle head assembly to drawing G1.305

Up and down spray function

Shown here with Model 556 full-cone nozzles



Fig. 12004

### Model 77 – Nozzle head

With Model 120 hollow-cone nozzles



Fig. 12005



Fig. 12006

## Assemblies – rotating systems

### Model 300 – Nozzle head

Self-rotating

Further information available on request



Fig. 12007

### Model 63 – Nozzle head

Self-rotating

Dual bearing support

With female thread fitting for various nozzle types



Fig. 12008

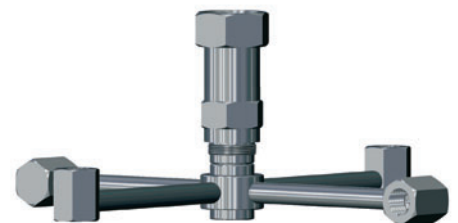


Fig. 12009

## Materials

- Brass
- Acid resistant stainless steel
- Heat resistant stainless steel
- Titanium

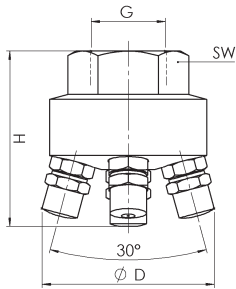
- Tantalum
- HASTELLOY
- INCONEL
- PTFE

- PVDF
- PVC
- PP
- RCH 1000

Custom products from other materials available on request

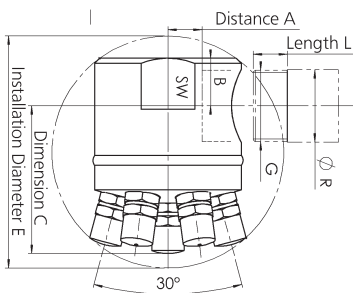
# Dimensions

## Model 60 – Nozzle head

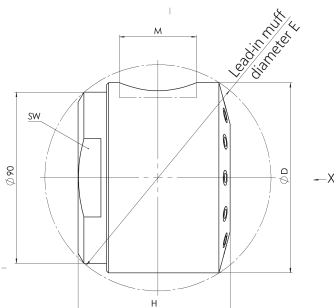


Nozzle head size	0	1	2	3	4	5	6	7	8	Note:
Screw fitting G	3/4	1	1	1 1/4	1 1/2	2	2 1/2	3	3	Use Model 121 V nozzles for Model 60/0 D and H are max. dimensions and refer to Model 200
Spanner size SW	36	41	46	60	70	80	95	120	120	
Nozzle model and size	No. of nozzles per Nozzle head									
553/0 and 556/0 G 1/8	6	7	9	14	20	28	37			
553/1 and 556/1 G 1/4	4	5	8	10	14	21	27	39	48	
553/2 and 556/2 G 3/8		4	7	8	10	16	19	27	35	
553/3 and 556/3 G 1/2			3	4	7	9	12	17	19	
553/4 and 556/4 G 3/4						7	9	12	14	
553/5 and 556/5 G 1									9	
100/1 and 200/1 G 1/8	4	5	8	10	14	21	27	39	48	
100/2 and 200/2 G 1/4		4	7	8	10	16	19	27	35	
100/3 and 200/3 G 3/8			4	6	8	12	14	19	24	
100/4 and 200/4 G 1/2			3	4	7	9	12	17	19	
100/5 and 200/5 G 3/4						5	7	9	12	
121 V G 1/4	4	5	8	10	14	21	27	39	48	
Max. diameter D approx.	60	72	92	102	112	144	160	180	190	
Max. height H approx.	60	70	90	95	100	115	125	140	150	

## Model 60 L – Nozzle head

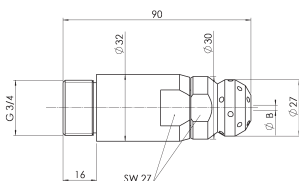


Nozzle head size	1/4	3/8	1/2	0	1	2	3	4	5	6	7	8
Screw fitting G	1/4	3/8	1/2	3/4	1	1	1 1/4	1 1/2	2	2 1/2	3	3
Pipe diameter R	14	17.2	21.3	26.9	33.7	33.7	42.4	48.3	60.3	76.1	88.9	88.9
Distance A	15	13	9	5	6	11	13	23	28			
Length L	9	11	14	16	19	19	20	21	24	27	30	30
Distance B	11	13	16	20	22	22	27	30	36			
Installation diameter and dimension C	Please ask for missing dimensions (depend on nozzle model, number and screw fitting G)											
Nozzle model and size	Number of nozzles per nozzle head											
553/0 and 556/0 G 1/8	6	6	6	6	7	9	14	20	28	37		
553/1 and 556/1 G 1/4	4	4	4	4	5	8	10	14	21	27	39	48
553/2 and 556/2 G 3/8					4	7	8	10	16	19	27	35
553/3 and 556/3 G 1/2						3	4	7	9	12	17	19
553/4 and 556/4 G 3/4									7	9	12	14
553/5 and 556/5 G 1												9
100/1 and 200/1 G 1/8	4	4	4	4	5	8	10	14	21	27	39	48
100/2 and 200/2 G 1/4					4	7	8	10	16	19	27	35
100/3 and 200/3 G 3/8						4	6	8	12	14	19	24
100/4 and 200/4 G 1/2						3	4	7	9	12	17	19
100/5 and 200/5 G 3/4									5	7	9	12
121 V G 1/4	4	4	4	4	5	8	10	14	21	27	39	48
Spanner size (if required) SW	41	41	41	41	55	65	70	90	110			



## Model 77 – Nozzle head

Nozzle head	4 nozzles	8 nozzles	12 nozzles	20 nozzles
Screw fitting M	30 x 1.5	42 x 1.5	42 x 1.5	42 x 1.5
Spanner size SW	46	60	65	80
Diameter D	60	80	90	100
Height H	60	71	72	80
Lead-in muff diameter E	DN 80	DN 100	DN 100	DN 125
Drawing number	G1.259a	G1.255a	G1.256a	G1.257a



## Model 300 – Nozzle head

## Custom designs/specialities

### Insertion pipe with nozzle head Model 77

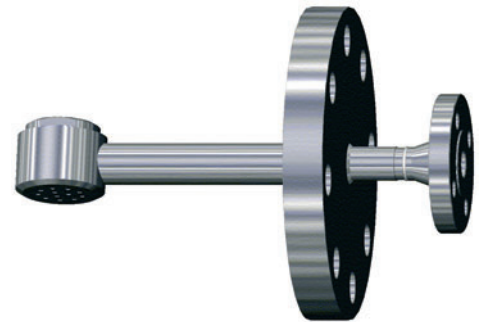


Fig. 12010

### Insertion pipe with nozzle head Model 65

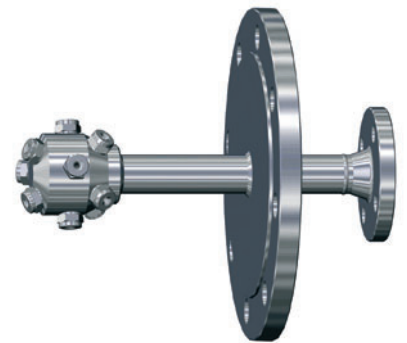


Fig. 12011

### Insertion pipe with nozzle head Model 300

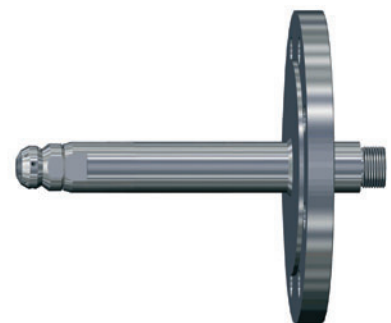


Fig. 12012

### Protected Insertion pipe with nozzle head 60/5

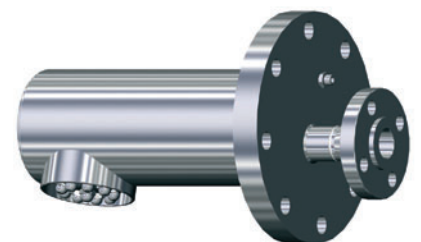


Fig. 12013

## Service spectrum

### Pilot test laboratory

Before any new spray nozzles are used we subject them to comprehensive trials in our own test laboratory – if need be to your operational parameters. During these tests, we precisely determine droplet size, velocities and flow densities with our modern DUAL PDA laser-measuring equipment.



### Test nozzles

Schlick spray nozzles are world renowned for highest precision. We can offer you the best and most lasting solution to your requirements. And, if you want, we can supply you with test nozzles in advance – just contact us.

### Engineering

Take advantage of our comprehensive expertise – from design to installation – the conception of new products or

the optimisation of existing plant. We would be glad to help you improve the success of your operation.

### Repair service

As well as competent advice and its inception, you can profit from an efficient after-sales service that guarantees long-term supply of all products. We carry out both repair and conversion of Schlick spray nozzles, and in emergency, we can supply spare parts quickly and reliably.

### Onsite service

If required we will investigate and develop an optimal solution to suit individual requirements onsite. We will advise you and give you support during installation and initial start-up of the plant. A further plus is the help available from our worldwide technical field service network.

### Custom products

As one of the leading spray nozzle manufacturers in Europe, we can offer both high quality standard solutions and are in the position of developing customised products for individual tasks as fast as possible, even for small production runs.



### Documentation to the customer's requirements

Reliability and quality are the basis for successful cooperation with our international customers. This applies both to our products and to our service. If you wish, we will supply you with all necessary documentation such as technical handbooks for the nozzles (drawings, flow diagrams, installation and operating instructions) together with factory and material specifications.



All specifications are subject to change (flow rates/dimensions).

The performance/flow rate specifications quoted are descriptive or product identities and can vary by up to  $\pm 5$  percent on delivery.



Düsen-Schlick GmbH  
Hutstraße 4  
96253 Untersiemau  
Germany  
Tel. +49 95 65 94 81 0  
Fax +49 95 65 28 70  
info@duesen-schlick.de

www.duesen-schlick.de  
www.duesen-schlick.com